

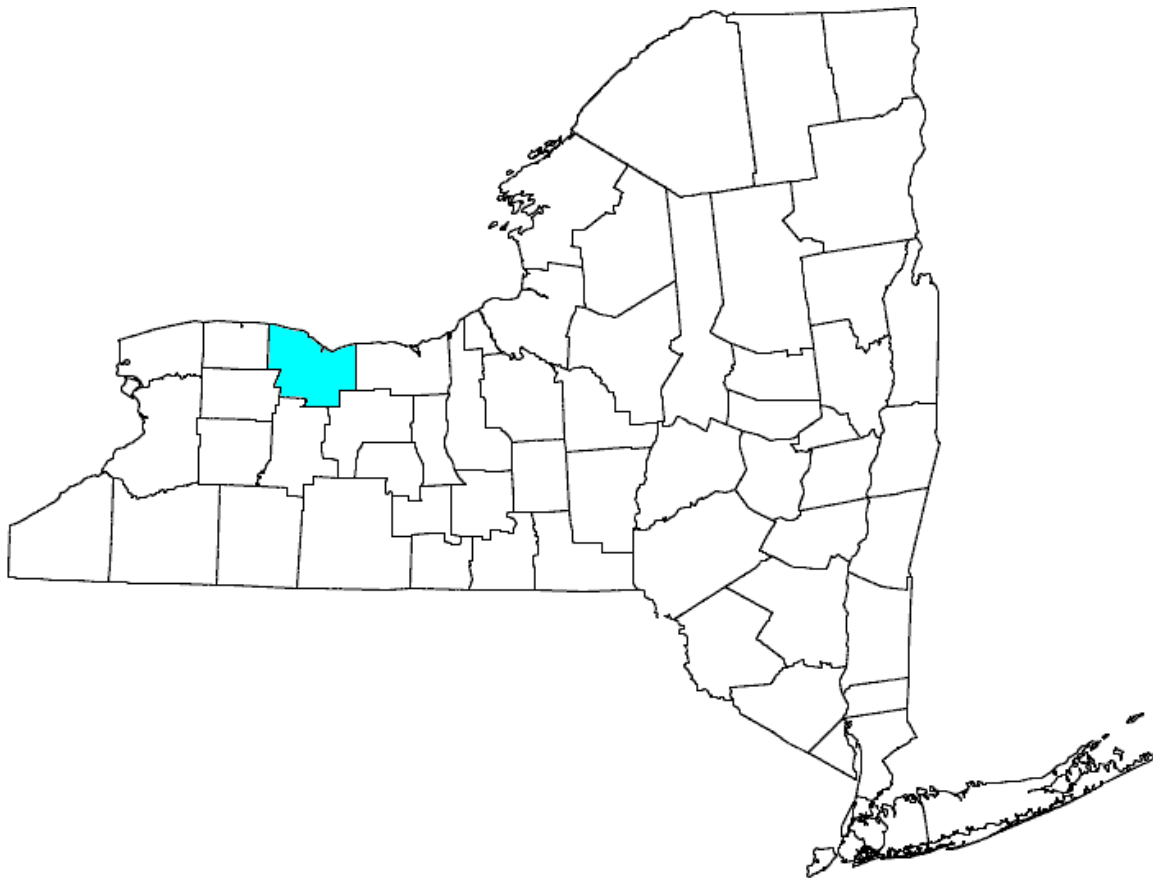
# 2023 Monitoring and Analysis Profiles With Selected Trend Data: 2019-2023

Child Protective Services

Foster Care

Adoption

## Monroe County



New York State Office of Children and Family Services  
Office of Research, Evaluation and Performance Analytics (OREPA)

**The 2023 Monitoring and Analysis Profiles (MAPS) data packages are being released for Child Protective Services, Foster Care, and Adoption Services.**

**Also, starting with 2009 MAPS, the Child Protective Services pages will reflect Family Assessment Response (FAR) data.**

## INTRODUCTION

The Monitoring and Analysis Profiles (MAPS) are data packages that provide information on the major child welfare services provided by local Departments of Social Services (DSS). MAPS was developed in 1985 to support the program monitoring role of the Regional Office staff and New York State Office of Children and Family Services (OCFS). Since then, the MAPS packages, which are produced annually, have also been disseminated to assist in child welfare planning and decision-making.

This MAPS package provides data on Child Protective Services (CPS), Foster Care, and Adoption for all counties. It contains detailed information for 2023 and charts of selected trend information for the five-year period, 2019-2023. Data for New York City, Upstate, and Statewide are contained in separate packages.

Program data on Child Protective Services, Foster Care, and Adoption are taken from the CONNECTIONS Activity Module, formerly the Child Care Review Service (CCRS) database. This is a statewide, computerized child welfare database.

The current MAPS package was developed based on the data contained in OCFS Data Warehouse on March 14, 2024, and from the CONNECTIONS database as of March 14, 2024. The numbers in the MAPS package may differ from those that appear on routine reports that are distributed by OCFS either because they are taken from the databases on different dates or because the definition of a term differs. Additionally, reporting lags by some Local Social Services Districts affect all Foster Care and Adoption data.

In most instances, numbers are converted into rates or percentages to highlight important aspects of the child welfare service programs. The use of rates and percentages is a critical component of MAPS, as it allows for comparisons by controlling for differences in population. The population figures used to calculate rates for 2018 through 2019 are taken from the 2018 Complete New York and New Jersey Demographic Database Files, Woods and Poole Economics, Inc. Starting from 2022 MAPS reporting, the population figures will be based on the annual county postcensal resident population estimates special tabulation compiled by the Census Bureau as the National Center for Health Statistics ceased to release postcensal bridged-race population estimates in 2021. For Child Protective Services data, rates are calculated based on the number of children ages 0 through 17 because very few reports are taken on youth aged 18 and over. However, since OCFS does have children in foster care 18 years old and above, the rates for Foster Care and Adoption are based on the number of children ages 0 through 21.

The MAPS package focuses on developing a profile of the child welfare services programs in each Local Social Services District. The data describe what are believed to be key, measurable characteristics of county child welfare services. The package is designed to provide a framework within which to examine the relationships among variables, raise questions, and initiate discussions about child welfare programs. It is not intended to judge performance or to focus attention on a single variable.

The MAPS package supports two types of comparisons - comparing a county DSS to a group of comparable counties for a given year and comparing the county to itself over time. Appendix B lists the counties included in each of the four Comparison Groups, along with a brief description of the methodology used in determining these groups. By referencing a county's data to its comparables, one can identify when a county differs from the norm. In and of themselves, differences from the norm do not have a positive or negative meaning. Such differences require discussion and analysis to understand them and to determine whether any action is needed.

Definitions necessary to understand the data are printed at the bottom of the appropriate page. These definitions also apply to the multi-year data pages. Appendix A contains additional clarifying information to facilitate an accurate interpretation of complex variables. Careful review and use of the MAPS package are required to understand the data.

*In summary, MAPS is not intended to be a package of indicators by which performance may be judged. Rather, it is intended to provide a framework within which reasoned questions can be asked by those who have been trained to its uses and limitations and who have substantive knowledge of the child welfare system in New York State.* Questions about this data and suggestions and/or comments related to the design of this package may be directed to Hui-Shien Tsao, Research Scientist, Office of Research, Evaluation and Performance Analytics, 52 Washington St., 3rd floor, Rensselaer, New York 12144-2796, or (518) 474-6791. E-mail requests for copies can be sent to Hui-Shien Tsao at [Hui-Shien.Tsao@ocfs.ny.gov](mailto:Hui-Shien.Tsao@ocfs.ny.gov).

# MONITORING AND ANALYSIS PROFILES

## 2023 Table of Contents

	Page
<b>Child Protective Services</b>	1
Workload Data	2
Determination Timeliness	3
Trend Data	4
<b>Foster Care Services</b>	5
Graph: Admissions/Discharges/In Care, 2019-2023	6
Admissions/Discharges/In Care	7
Characteristics	8
Services Prior to/at Admission	9
Time in Care by Age	10
Facility Type by Placement, Location and Age	11
Discharges by Time in Care	12
Goal by Age	13
Days In Care	14
Trend Data	15
<b>Adoption Services</b>	16
Milestones	17
Waiting Population on 12/31/2023	18
Time to Achieve Milestones	19
Characteristics	20
Trend Data	21

**CHILD  
PROTECTIVE  
SERVICES**

**CHILD PROTECTIVE SERVICES  
WORKLOAD DATA  
2023**

	MONROE		COMPARABLES
	N	Rate	Rate
<b>REPORTS RECEIVED</b>	6,741	44.6	40.0
	N	%	%
<b>REPORTS BY MANDATED REPORTER</b>	4,449	66.0	73.5
<b>OF REPORTS DETERMINED:</b>			
<b>Reports Indicated</b>	1,388	21.7	21.6
<b>Reports Unfounded</b>	4,997	78.3	78.4
<b>OF REPORTS REGISTERED:</b>			
<b>Determinations     Overdue</b>	355	5.3	7.0
<b>OF REPORTS ASSESSED:</b>			
<b>Family Assessment Response</b>	1	0.0	

Reports Received

**N:** Number of reports received during the calendar year, whether determined or assessed.

**Rate:** Number of reports received during the calendar year for every 1,000 children in the district.

Reports by Mandated Reporter

**N:** Number of reports received during the calendar year with a mandated reporter as the source of the report.

**%:** Number of reports received during the calendar year with a mandated reporter as the source of the report, as a percentage of all reports received during the calendar year.

Reports Determined

**N:** Number of reports that were registered in calendar year 2023 and indicated/unfounded by 3/14/24.

**%:** Number of reports that were registered in calendar year 2023 and indicated/unfounded by 3/14/24, as a percentage of all reports that were registered in 2023 and determined by 3/14/24.

Determinations Overdue

**N:** Number of reports that were registered in calendar year 2023 and had no determination by 3/14/24.

**%:** Number of reports that were registered in calendar year 2023 and had no determination by 3/14/24, as a percentage of all reports that were registered in 2023, excluding those reports selected for assessment rather than investigation.

Reports Assessed

**N:** Number of reports that were registered in calendar year 2023, assigned to the Family Assessment Response track and closed by 3/14/24.

Rate is the total number of FAR reports divided by the total number of reports received.

See Appendix A for detailed definitions of CONNECTIONS data and updates.

**CHILD PROTECTIVE SERVICES  
REPORT DETERMINATIONS -- TIMELINESS  
2023**

REPORT DETERMINATION TIMELINESS:	MONROE		COMPARABLES
	N	%	%
	3,148	49.3	57.4

DAYS TO REPORT DETERMINATION:	MONROE		COMPARABLES
	N	%	%
<b>All Reports Determined</b>			
0-30 Days	1,453	22.8	18.0
31-60	1,695	26.5	39.4
61-90	1,119	17.5	22.9
>90	2,118	33.2	19.7

<b>Indicated</b>			
0-30 Days	238	3.7	3.0
31-60	337	5.3	8.0
61-90	293	4.6	5.7
>90	520	8.1	5.0

<b>Unfounded</b>			
0-30 Days	1,215	19.0	15.0
31-60	1,358	21.3	31.4
61-90	826	12.9	17.2
>90	1,598	25.0	14.7

Report Determination Timeliness

N: Number of reports that were registered in the calendar year and determined within 60 days.

%: Number of reports that were determined within 60 days, as a percentage of all reports that were determined in the calendar year 2023, excluding those reports selected for assessment rather than investigation.

Days to Report Determination: Number of reports determined in calendar year 2023 that received a determination by 03/14/24 and were determined within each respective range of days for each of the three determination categories. See Appendix A for detailed definitions of CONNECTIONS data.

**CHILD PROTECTIVE SERVICES  
TREND DATA  
2019-2023**

**REPORTS RECEIVED:**

	<b>N</b>	<b>Annual Rate</b>	<b>Percent Change In Rate</b>
2019	7,503	47.4	
2020	6,379	41.7	-12.0
2021	7,135	47.0	12.7
2022	6,939	44.8	-4.7
2023	6,741	44.6	-0.4

**REPORTS INDICATED:**

	<b>N</b>	<b>Annual Rate</b>	<b>Percent Change In Rate</b>
2019	1,788	23.8	
2020	1,599	25.1	5.2
2021	1,812	25.4	1.3
2022	1,442	20.8	-18.2
2023	1,388	21.7	4.6

**FAR REPORTS ASSESSED:**

	<b>N</b>	<b>Annual Rate</b>
2019		.
2020	1	.0
2021	1	.0
2022		.
2023	1	.0

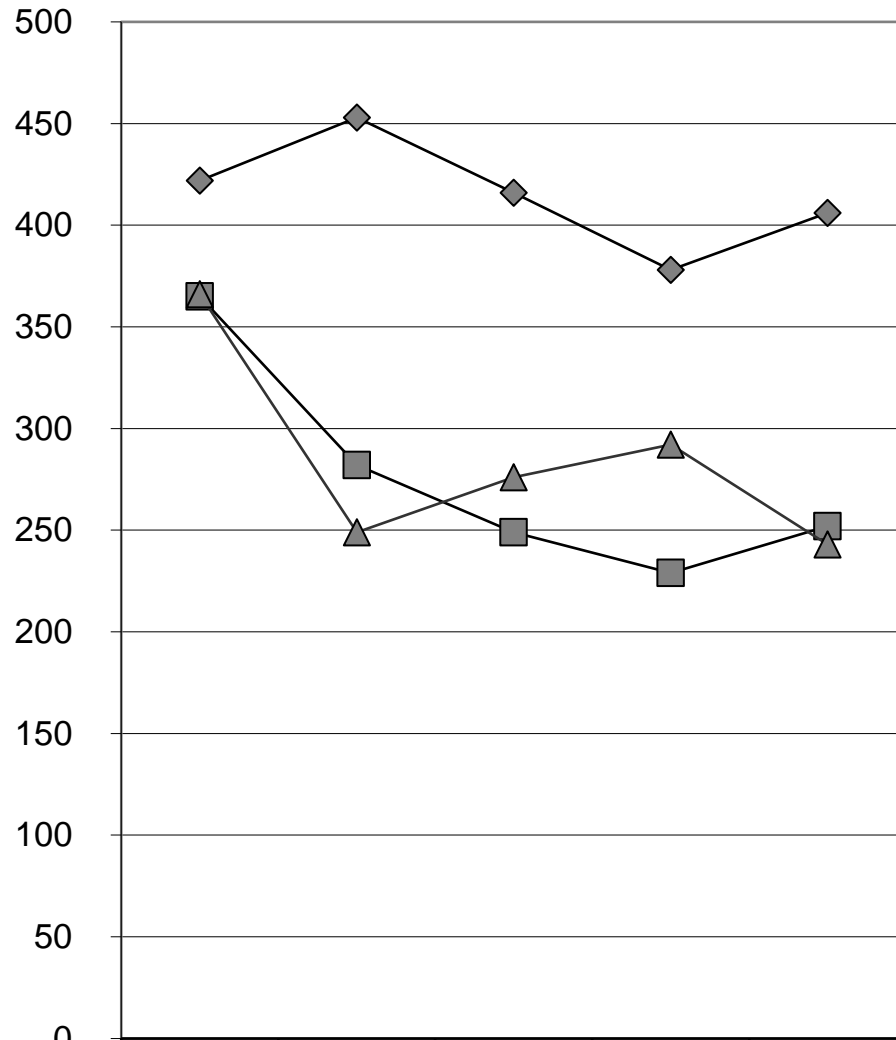
FAR Reports Assessed:

N: Number of reports that were registered in calendar year 2023 and assigned to the Family Assessment Response track by 03/14/24, including reports not yet closed.  
See Appendix A for details on CONNECTIONS CPS data.



**FOSTER  
CARE**

**FOSTER CARE  
IN CARE, ADMISSIONS, and DISCHARGES  
Monroe County  
2019-2023**



	2019	2020	2021	2022	2023
◆ In Care	422	453	416	378	406
■ Admissions	365	282	249	229	252
▲ Discharges	366	249	276	292	243

**FOSTER CARE ADMISSIONS/DISCHARGES/INCARE  
BY AGE, RACE AND ETHNICITY  
2023**

	N	Rate	Comparison
Admissions	252	1.3	1.2
In Care	406	2.1	2.5
Discharges	243	37.4	36.1

**AGE:**

	Admissions			In Care			Discharges		
	N	%	Comp.	N	%	Comp.	N	%	Comp.
< 2	51	20.2	23.1	47	11.6	12.7	27	11.1	9.3
2-5	56	22.2	20.5	100	24.6	25.4	68	28.0	24.1
6-9	40	15.9	15.0	71	17.5	18.9	40	16.5	14.9
10-13	36	14.3	15.0	66	16.3	14.8	40	16.5	14.4
14-17	66	26.2	24.8	91	22.4	21.3	45	18.5	25.1
18+	3	1.2	1.6	31	7.6	6.9	23	9.5	12.2

**RACE/ETHNICITY:**

	Admissions		In Care		Discharges	
	N	%	N	%	N	%
White	42	16.7	88	21.7	37	15.2
African American	122	48.4	166	40.9	119	49.0
Latino	54	21.4	93	22.9	62	25.5
Native American/ Alaska Native	0	0.0	0	0.0	0	0.0
Asian	3	1.2	5	1.2	1	0.4
Unknown	31	12.3	54	13.3	24	9.9

**PERCENTAGE OF DISCHARGES BY DESTINATION:**

	Home	Adoption	Independent Living	Other State Agency	Other
	%	%	%	%	%
MONROE	72.4	14.0	9.1	3.7	0.8

**Admissions:** N: Number of children admitted to foster care during the calendar year. If multiple admissions of the same child occur during the calendar year, only the most recent admission is counted.

**Rate:** The number of children admitted to foster care during the calendar year for every 1,000 children in the district.

**Discharges:** N: Number of children discharged during the calendar year. The number does not include trial discharges.

This discharge number may not exactly match discharge numbers reported on other MAPs pages due to definitional differences. %: Children discharged during the calendar year, as a percentage of all children who were in foster care at any time during the calendar year.

**In Care:** N: Number of children in foster care on 12/31/23. Children who are absent or in trial discharge are not counted as in care population.

**Rate:** The number of children in foster care on 12/31/23 for every 1,000 children in the district.

**Race/Ethnicity:** See Appendix A for details. Race/ethnicity is classified into mutually exclusive categories. In the process, children identified as White/Hispanic or Black /Hispanic are counted under Latino and not in White or African American.

**Destination:** For children discharged during 2023, the stated discharge reason:

Return to a homelike setting (Home); discharge to adoption (Adoption); assuming responsibility for self, e.g. independent living, military service, etc. (Independent Living); discharge to another state service system (Other State Agency); or one of several other reasons, e.g., moved out of district, etc. (Other).

## FOSTER CARE CHARACTERISTICS 2023

### PLACEMENT IN FOSTER BOARDING AND ADOPTIVE HOMES:

Child's Race	Total with Race/ Ethnic Code	# Same as Foster/ Adoptive Parent	% Same as Foster/ Adoptive Parent
Total	256	106	41.4
White	66	46	69.7
African American	106	48	45.3
Latino	79	12	15.2
Native American/Alaska Native	0	0	0.0
Asian	5	0	0.0
Unknown/Missing	<b>N</b> 44		<b>%</b> 14.7

### SIBLINGS IN FOSTER CARE:

Group Size:	Separated			Partly Separated			Intact		
	N	%	Comp	N	%	Comp	N	%	Comp
Two	26	35.1	27.2	-	-	-	48	64.9	72.8
Three	3	7.7	5.8	24	61.5	43.9	12	30.8	50.3
Four or more	9	21.4	12.0	33	78.6	65.2	0	0.0	22.9

### CHILDREN RETURNING TO CARE BY LENGTH OF TIME SINCE LAST DISCHARGE:

	N	MONROE %	Comparables %
Total (0-24 months)	40	15.9	13.0
0-3 months	12	4.8	3.5
4-12 months	18	7.1	6.6
13-24 months	10	4.0	2.9

#### Total With Race/Ethnic Code:

**N:** Number of children in foster boarding or adoptive homes on 12/31/23 who have a race/ethnic code in CONNECTIONS.

#### Number With Same Race/Ethnic Code:

**N:** Number of children in foster boarding or adoptive homes on 12/31/23 whose race/ethnic code in CONNECTIONS is the same as at least one of his or her foster parent's race/ethnic code in CONNECTIONS. Congregate care and approved relative homes are excluded. **%:** Children with a race/ethnic code in CONNECTIONS whose code is the same as at least one foster parent's race/ethnic code in CONNECTIONS as a percentage of children in foster care on 12/31/23 with a race/ethnic code for a specified race/ethnic group. There are a small number of foster parents with no race/ethnic code in the CONNECTIONS database; these are counted as not matched.

**Siblings in Foster Care: Separated:** All of the siblings in a sibling group of the specified size are in separate facilities.

**Partly Separated:** Some of the siblings in a sibling group of the specified size are in separate facilities.

**Intact:** All of the siblings in a sibling group of the specified size are in the same facility.

**N:** Number of children in foster care on 12/31/23 who have a sibling in foster care. **%:** Number of siblings who are separated, partly separated, or intact as a percentage of all siblings in a sibling group of the same size.

**Children Returning to Care By Length of Time Since Last Discharge:** **N:** Number of children who were readmitted to foster care in 2023 who had been discharged from foster care within the specified number of months prior to the last 2023 admission. Children returning to foster care from a trial discharge are not considered to have been readmitted. **%:** The number of children readmitted to foster care in 2023, as a percentage of the total number of children admitted to foster care in 2023.

**Race/Ethnicity** – see Appendix A for definitions.

**SERVICES PRIOR TO/AT 2023 FOSTER CARE ADMISSION**

	MONROE	
	N	%
Mandated/Non-Mandated Preventive Services Only	3	1.2
Child Protective Services Only	29	11.5
Both Mandated/Non-Mandated Preventive and CPS	100	39.7
Neither Mandated/Non-Mandated Preventive nor CPS	120	47.6

**SERVICES PRIOR TO/AT 2023 ADMISSION BY AGE:**

AGE	MANDATED/NON-MANDATED PREVENTIVE ONLY			CHILD PROTECTIVE ONLY		
	MONROE			MONROE		
	N	%	COMPARABLES	N	%	COMPARABLES
< 2	0	0.0	0.5	12	23.5	30.5
2-5	0	0.0	0.8	6	10.7	24.9
6-9	0	0.0	1.8	2	5.0	27.0
10-13	0	0.0	6.4	5	13.9	21.5
14-17	2	3.0	17.4	4	6.1	11.4
18+	1	33.3	18.5	0	0.0	5.6

AGE	BOTH MANDATED/NON-MANDATED PREVENTIVE AND PROTECTIVE			NEITHER MANDATED/NON-MANDATED PREVENTIVE NOR PROTECTIVE		
	MONROE			MONROE		
	N	%	COMPARABLES	N	%	COMPARABLES
< 2	23	45.1	33.9	16	31.4	35.1
2-5	32	57.1	46.4	18	32.1	27.9
6-9	16	40.0	37.2	22	55.0	34.0
10-13	14	38.9	36.2	17	47.2	35.9
14-17	15	22.7	26.5	45	68.2	44.8
18+	0	0.0	4.4	2	66.7	49.3

Please Note: All four categories are mutually exclusive.

Mandated/Non-mandated Preventive Services Prior to or at the time of Foster Care Admission: N: Number of children admitted to foster care in 2023 who were opened to Mandated or Non-mandated Preventive Services on the date of the foster care admission or who had a Service Program Choice of Mandated or Non-mandated Preventive Services during the 12 months preceding admission.

Child Protective Services Prior to or at the time of Foster Care Admission: N: Number of children admitted to foster care in 2023 who were opened to Child Protective Services on the date of the foster care admission or who had a Service Program Choice of Protective during the 12 months preceding admission.

Services Prior To/At 2023 Admission by Age: %: Number of children in each age group within each category admitted to foster care in 2023 as a percentage of all children in that same age group who were admitted to foster care in 2023.

**TIME IN CARE BY AGE**  
**12/31/23**

		AGE OF CHILDREN						
		< 2 YEARS %	2-5 YEARS %	6-9 YEARS %	10-13 YEARS %	14-17 YEARS %	18+ YEARS %	PERCENT OF TOTAL
<b>&lt; 1 YEAR</b>		<hr/>						
	MONROE	61.7	40.0	31.0	33.3	46.2	19.4	39.7
	COMPARABLES	69.5	36.3	34.0	33.3	39.6	11.7	38.3
<b>1-2 YEARS</b>		<hr/>						
	MONROE	38.3	20.0	18.3	19.7	18.7	22.6	21.7
	COMPARABLES	30.5	24.1	23.9	23.0	18.0	12.4	22.6
<b>2-3 YEARS</b>		<hr/>						
	MONROE		24.0	14.1	12.1	16.5	9.7	14.8
	COMPARABLES		21.7	14.0	15.7	12.7	16.1	14.4
<b>&gt; 3 YEARS</b>		<hr/>						
	MONROE		16.0	36.6	34.8	18.7	48.4	23.9
	COMPARABLES		18.0	28.1	27.9	29.7	59.9	24.7
<b>TOTAL</b>		<hr/>						
	MONROE	N= 47	N= 100	N= 71	N= 66	N= 91	N= 31	N= 406

For children in foster care on 12/31/23, the chart shows the percentage of each age group (column) by the length of time indicated in the rows. Districts with no children in care for an age group are excluded from the comparable calculation for that column.

**ADMISSIONS, DISCHARGES, AND IN CARE  
FACILITY TYPE BY PLACEMENT, LOCATION AND AGE  
2023**

TYPE OF PLACEMENT:	AGE OF CHILDREN			PERCENT	COMP PERCENT	PLACEMENT Out Of County N	LOCATION Out Of State N
	< 11 YEARS N	11+ YEARS N	TOTAL N				
<b>Congregate Care</b>							
Admissions	0	42	42	16.7	20.8		
In Care	6	53	59	14.5	13.1	33	0
Discharges	0	28	28	11.5	22.4		
<b>Foster Boarding Homes</b>							
Admissions	150	50	200	79.4	56.1		
In Care	195	105	300	73.9	55.0	13	0
Discharges	135	63	198	81.5	49.6		
<b>Approved Relative Homes</b>							
Admissions	8	2	10	4.0	21.5		
In Care	34	9	43	10.6	27.7	6	0
Discharges	9	5	14	5.8	25.7		
<b>Other</b>							
Admissions	0	0	0	0.0	1.7		
In Care	0	4	4	1.0	4.3	1	0
Discharges	0	3	3	1.2	2.3		
<b>Total</b>							
Admissions	158	94	252	100.0			
In Care	235	171	406	100.0		53	0
Discharges	144	99	243	100.0			

**Admissions & Discharges:** N: The number of children admitted to/discharged from each type of placement during 2023.

**In Care:** N: The number of children in each type of placement on 12/31/23.

**%:** Children in each facility type as a percentage of all children admitted, discharged or in care.

**Congregate Care:** Includes AOBH, Group Home, Group Residence and Institution.

**Other:** Includes SILP (Supervised Independent Living Program) and all other categories.

**Placement Location:** N: The number of children in a placement outside the county on 12/31/23. Out of county does not include out of state placements.

**FOSTER CARE DISCHARGES  
BY TIME IN CARE  
2023**

**AGE OF CHILDREN AT DISCHARGE**

	<b>&lt; 2 YEARS %</b>	<b>2-5 YEARS %</b>	<b>6-9 YEARS %</b>	<b>10-13 YEARS %</b>	<b>14-17 YEARS %</b>	<b>18+ YEARS %</b>	<b>PERCENT OF TOTAL</b>
<b>&lt; 1 YEAR</b>							
MONROE	92.6	44.1	45.0	57.5	64.4	13.0	52.7
COMPARABLES	74.2	31.8	44.7	43.1	58.7	28.2	46.1
<b>1-2 YEARS</b>							
MONROE	7.4	17.6	30.0	20.0	15.6	0.0	16.9
COMPARABLES	25.8	23.2	21.2	21.5	17.1	11.9	19.7
<b>2-3 YEARS</b>							
MONROE		22.1	2.5	7.5	8.9	8.7	10.3
COMPARABLES		22.7	10.2	11.2	8.7	10.4	12.2
<b>&gt; 3 YEARS</b>							
MONROE		16.2	22.5	15.0	11.1	78.3	20.2
COMPARABLES		22.3	23.9	24.2	15.5	49.4	22.0
<b>TOTAL</b>							
MONROE	N= 27	N= 68	N= 40	N= 40	N= 45	N= 23	N= 243

For children discharged from foster care during 2023, the chart shows the percentage of each age group (column) by the length of time indicated in the rows. Districts with no children discharged for an age group are excluded from the comparable calculation for that column.  
Discharges: The total discharge number may not exactly match discharge numbers reported on other MAPS page. The discrepancy is due to the exclusion of a small number of children who have same admission and discharge dates.



**GOAL BY AGE**  
**12/31/23**

		<b>&lt; 2 YEARS %</b>	<b>2-5 YEARS %</b>	<b>6-9 YEARS %</b>	<b>10-13 YEARS %</b>	<b>14-17 YEARS %</b>	<b>18+ YEARS %</b>	<b>PERCENT OF TOTAL</b>	
<b>ADULT CUSTODIAL CARE</b>									
	MONROE	0.0	0.0	0.0	0.0	0.0	6.9	0.5	
	COMPARABLES	0.0	0.0	0.0	0.0	0.7	5.7	0.6	
<b>ADOPTION</b>									
	MONROE	22.0	24.5	29.6	28.8	14.1	6.9	22.3	
	COMPARABLES	11.9	28.0	32.0	28.9	22.7	5.6	24.1	
<b>G O A</b>	<b>PARENT/GUARDIAN</b>								
	MONROE	78.0	72.4	69.0	63.6	43.5	6.9	59.7	
	COMPARABLES	84.8	65.5	61.4	64.0	52.3	11.2	60.6	
<b>L S</b>	<b>ANOTHER PLANNED LIVING ARRANGEMENT (APLA)</b>								
	MONROE	0.0	0.0	0.0	0.0	16.5	37.9	6.4	
	COMPARABLES	0.0	0.0	0.0	0.0	11.2	65.4	6.9	
<b>OTHER GOALS</b>									
	MONROE	0.0	3.1	1.4	7.6	25.9	41.4	11.0	
	COMPARABLES	3.3	6.5	6.6	7.0	13.1	12.1	7.9	
<b>TOTAL IN CARE</b>									
	MONROE	N= 41	N= 98	N= 71	N= 66	N= 85	N= 29	N= 390	

For children in foster care on 12/31/23 with a reported goal, the chart shows the percentage of each age group (column) with the goal indicated in the row. Districts with no children in care for an age group are excluded from the comparable calculation for that column. Children with waivers are included in the Adoption percentages.

Note: The totals on this page do not count children where a goal is not set.

**DAYS IN CARE****Total Days in Care**

	<b>2019</b>	<b>2020</b>	<b>2021</b>	<b>2022</b>	<b>2023</b>
Institution	22,429	20,162	17,282	10,553	11,987
Foster Boarding Home	116,826	124,845	128,186	111,484	108,148
Agency Operated Boarding Home	329	186	442	261	658
Group Residence	0	0	121	233	292
Group Home	3,350	2,287	2,587	2,637	3,885
Adoptive Home	0	172	184	588	7
Approved Relative Home	3,660	7,156	15,029	17,397	16,545
Supervised Independent Living Program	2,143	3,459	2,510	2,041	2,489
Other	365	0	0	0	0
<b>Total</b>	<b>149,102</b>	<b>158,267</b>	<b>166,341</b>	<b>145,194</b>	<b>144,011</b>

	<b>2019</b>	<b>2020</b>	<b>2021</b>	<b>2022</b>	<b>2023</b>
Congregate Care	28,616	26,094	22,942	15,725	19,311
Foster Boarding Home/Adoptive Home	116,826	125,017	128,370	112,072	108,155
Approved Relative Home	3,660	7,156	15,029	17,397	16,545
<b>Total</b>	<b>149,102</b>	<b>158,267</b>	<b>166,341</b>	<b>145,194</b>	<b>144,011</b>

**Percent of Days in Care**

	<b>2019</b>	<b>2020</b>	<b>2021</b>	<b>2022</b>	<b>2023</b>
Institution	15.0%	12.7%	10.4%	7.3%	8.3%
Foster Boarding Home	78.4%	78.9%	77.1%	76.8%	75.1%
Agency Operated Boarding Home	0.2%	0.1%	0.3%	0.2%	0.5%
Group Residence	0.0%	0.0%	0.1%	0.2%	0.2%
Group Home	2.2%	1.4%	1.6%	1.8%	2.7%
Adoptive Home	0.0%	0.1%	0.1%	0.4%	0.0%
Approved Relative Home	2.5%	4.5%	9.0%	12.0%	11.5%
Supervised Independent Living Program	1.4%	2.2%	1.5%	1.4%	1.7%
Other	0.2%	0.0%	0.0%	0.0%	0.0%
<b>Total</b>	<b>100.0%</b>	<b>100.0%</b>	<b>100.0%</b>	<b>100.0%</b>	<b>100.0%</b>

	<b>2019</b>	<b>2020</b>	<b>2021</b>	<b>2022</b>	<b>2023</b>
Congregate Care	19.2%	16.5%	13.8%	10.8%	13.4%
Foster Boarding Home/Adoptive Home	78.4%	79.0%	77.2%	77.2%	75.1%
Approved Relative Home	2.5%	4.5%	9.0%	12.0%	11.5%
<b>Total</b>	<b>100.0%</b>	<b>100.0%</b>	<b>100.0%</b>	<b>100.0%</b>	<b>100.0%</b>

**Percent Change Over Previous Year**

	<b>2019-2020</b>	<b>2020-2021</b>	<b>2021-2022</b>	<b>2022-2023</b>	<b>2019-2023</b>
Institution	-10.1%	-14.3%	-38.9%	13.6%	-46.6%
Foster Boarding Home	6.9%	2.7%	-13.0%	-3.0%	-7.4%
Agency Operated Boarding Home	-43.5%	137.6%	-41.0%	152.1%	100.0%
Group Residence	.	.	92.6%	25.3%	.
Group Home	-31.7%	13.1%	1.9%	47.3%	16.0%
Adoptive Home	.	7.0%	219.6%	-98.8%	.
Approved Relative Home	95.5%	110.0%	15.8%	-4.9%	352.0%
Supervised Independent Living Program	61.4%	-27.4%	-18.7%	22.0%	16.2%
Other	-100.0%	.	.	.	-100.0%
<b>Total</b>	<b>6.1%</b>	<b>5.1%</b>	<b>-12.7%</b>	<b>-0.8%</b>	<b>-3.4%</b>

	<b>2019-2020</b>	<b>2020-2021</b>	<b>2021-2022</b>	<b>2022-2023</b>	<b>2019-2023</b>
Congregate Care	-8.8%	-12.1%	-31.5%	22.8%	-32.5%
Foster Boarding Home/Adoptive Home	7.0%	2.7%	-12.7%	-3.5%	-7.4%
Approved Relative Home	95.5%	110.0%	15.8%	-4.9%	352.0%
<b>Total</b>	<b>6.1%</b>	<b>5.1%</b>	<b>-12.7%</b>	<b>-0.8%</b>	<b>-3.4%</b>

Other: Includes residential treatment facilities, skilled nursing facilities, specialized schools, etc.

Congregate Care: Includes Institutions, AOBH, Group Home, Group Residence, SILPs and Other.

Adoptive Home: Includes Adoptive and/or Adoption Subsidy Home.

**FOSTER CARE  
TREND DATA  
2019-2023**

**CHILDREN IN CARE:**

	<b>N</b>	<b>Annual Rate</b>	<b>Percent Change in Rate</b>	<b>Comp Rate</b>	<b>Percent Change in Comparable Rate</b>
2019	422	2.1		2.3	
2020	453	2.3	9.7	2.4	3.4
2021	416	2.1	-7.3	2.5	4.0
2022	378	1.9	-11.0	2.5	-1.6
2023	406	2.1	8.8	2.5	1.4

**CHILDREN ADMITTED:**

	<b>N</b>	<b>Annual Rate</b>	<b>Percent Change in Rate</b>	<b>Comp Rate</b>	<b>Percent Change in Comparable Rate</b>
2019	365	1.8		1.6	
2020	282	1.4	-21.0	1.3	-19.7
2021	249	1.3	-10.9	1.4	4.3
2022	229	1.2	-9.9	1.3	-2.7
2023	252	1.3	11.5	1.2	-7.6

**CHILDREN DISCHARGED:**

	<b>N</b>	<b>Annual Rate</b>	<b>Percent Change in Rate</b>	<b>Comp Rate</b>	<b>Percent Change in Comparable Rate</b>
2019	366	46.4		42.1	
2020	249	35.5	-23.6	35.4	-15.9
2021	276	39.9	12.4	38.0	7.5
2022	292	43.6	9.3	38.2	0.5
2023	243	37.4	-14.1	36.1	-5.5

For detailed description of variables see page 7, "Foster Care Admissions/Discharges/In Care by Age, Race and Ethnicity."

## ADOPTION

**ADOPTION MILESTONES  
2023**

	MONROE		COMPARABLES
	N	%	%
<b>CHILDREN WHO HAD A MILESTONE OCCUR DURING 2023:</b>			
Goal Set during 2023	55	8.5	8.3
Freed during 2023	51	7.9	6.7
Placed during 2023	49	38.6	23.9
Discharged to Adoption during 2023	34	27.6	43.4

<b>CHILDREN IN FOSTER CARE ON 12/31/23 WITH A GOAL OF ADOPTION:</b>	<b>87</b>
---	-----------

Goal Set

N: Number of children with a goal set to Adoption during the calendar year.

%: Children who had a "goal set," as a percentage of all children in foster care at any time during the calendar year.

Freed

N: Number of children freed during the calendar year.

%: Children "freed," as a percentage of all children in foster care at any time during the calendar year.

Placed

N: Number of children placed for Adoption during the calendar year.

%: Children "placed," as a percentage of all children in foster care who had a goal of Adoption on 12/31/23 or had a goal set to Adoption, were freed, placed or discharged to Adoption at any time during the calendar year.

Discharged to Adoption

N: Number of children discharged to Adoption during the calendar year.

%: Children "discharged," as a percentage of children in foster care at any time during the calendar year, who had a goal of Adoption and had a status of free for Adoption.

Children with waivers are excluded from all Ns and Percentages.

**WAITING POPULATION ON 12/31/23**

<b>CHILDREN IN FOSTER CARE FOR 2 OR MORE YEARS WITH A GOAL OF:</b>									
	<b>RETURN HOME</b>			<b>ADOPTION</b>			<b>OTHER</b>		
	<b>N</b>	<b>%</b>	<b>Comp</b>	<b>N</b>	<b>%</b>	<b>Comp</b>	<b>N</b>	<b>%</b>	<b>Comp</b>
Less than 8 years old:	31	51.7	34.3	29	48.3	61.6	0	0.0	4.1
8 years old or older:	26	26.8	25.7	40	41.2	42.6	31	32.0	31.8

<b>CHILDREN WAITING TO ACHIEVE AN ADOPTION MILESTONE</b>					
	<b>TOTAL</b>	<b>WAITING LESS THAN 1 YEAR</b>		<b>WAITING 1 YEAR OR MORE</b>	
		<b>N</b>	<b>N</b>	<b>%</b>	<b>N</b>
<b>Goal and not Free:</b>	2	1	50.0	1	50.0
Less than 8 years old:	2	1	50.0	1	50.0
8 years old or older:	0	0	0.0	0	0.0
<b>Free and not Placed:</b>	27	13	48.1	14	51.9
Less than 8 years old:	9	7	77.8	2	22.2
8 years old or older:	18	6	33.3	12	66.7
<b>Free, Placed and not Discharged:</b>	58	37	63.8	21	36.2
Less than 8 years old:	32	25	78.1	7	21.9
8 years old or older:	26	12	46.2	14	53.8

In Foster Care for 2 or more years with a Goal of: Return Home/Adoption/Other Goal N: As of 12/31/23, the number of children who had been in care for 2 years or longer, who were in the specified age group, and who had the specified goal. %: As of 12/31/23, children who had been in care for 2 years or longer, who were in the specified age group, and who had the specified goal, as a percentage of all children in foster care who were in the specified age group.

Goal and not Free N: As of 12/31/23, all children who had a goal of Adoption and who were "waiting" to be freed for the specified time. %: As of 12/31/23, all children who had a goal of Adoption and who were "waiting" to be freed for the specified time, as a percentage of all children who were "waiting" to be freed.

Free and not Placed N: As of 12/31/23, all children who had a goal of Adoption, were freed for Adoption, and were "waiting" to be placed for the specified time. %: As of 12/31/23, all children who had a goal of Adoption, were freed for Adoption, and were "waiting" to be placed for the specified time, as a percentage of all children who were "waiting" to be placed.

Free, Placed and not Discharged (to Adoption) N: As of 12/31/23, all children who had a goal of Adoption, were freed for Adoption, and were in an adoptive placement, and were "waiting" to be discharged for the specified time. %: As of 12/31/23, all children who had a goal of Adoption, were freed for Adoption, were in an adoptive placement, and were "waiting" to be discharged for the specified time, as a percentage of all children who were "waiting" to be discharged.

Less than 8 years old and 8 years old or older N: For the three waiting populations described above, the number of children in the specified age group and time period. %: For the children in each age group who are in the three waiting populations described above, the % that were waiting, as of 12/31/23, less than one year or one year or more.

Children with waivers from photo listing are excluded from all Ns and Percentages in the Children Waiting to Achieve an Adoption Milestone section.

**TIME TO ACHIEVE MILESTONES  
DURING 2023**

Admission to Goal Set:	LESS THAN 2 YEARS		2 TO 3 YEARS		GREATER THAN 3 YEARS	
	N	%	N	%	N	%
	Less than 8 years:	18	46.2	8	20.5	13
8 years or older:	4	25.0	6	37.5	6	37.5

	LESS THAN 6 MONTHS		6 MONTHS TO 1 YEAR		GREATER THAN 1 YEAR	
	N	%	N	%	N	%
<b>Goal to Free:</b>						
Less than 8 years:	12	92.3	1	7.7	0	0.0
8 years or older:	5	83.3	0	0.0	1	16.7
<b>Petition Date to Free Date:</b>						
Less than 8 years:	0	0.0	0	0.0	0	0.0
8 years or older:	0	0.0	0	0.0	0	0.0
<b>Free to Place:</b>						
Less than 8 years:	36	94.7	1	2.6	1	2.6
8 years or older:	6	54.5	3	27.3	2	18.2
<b>Placed with Foster Parent:</b>						
Less than 8 years:	36	94.7	1	2.6	1	2.6
8 years or older:	6	54.5	3	27.3	2	18.2
<b>Not Placed with Foster Parent:</b>						
Less than 8 years:	0	0.0	0	0.0	0	0.0
8 years or older:	0	0.0	0	0.0	0	0.0

Admission to Goal Set: N: For children of the specified age group who had their goal set to Adoption in 2023, the time from admission to foster care to having their goal set to Adoption.

Goal to Free: N: For children of the specified age group who were freed for Adoption in 2023, the time from having the goal set until they were freed.

Petition Date to Free Date: N: For children of the specified age group who were freed for Adoption in 2023, the time from the date their petition to be freed was filed until they were freed.

Free to Place: N: For children of the specified age group who were placed in an Adoptive home in 2023, the time from when they were freed until the placement.

Placed with Foster Parent: N: Children who were placed for Adoption with the foster parent(s) they were living with.

Not Placed with Foster Parent: N: Children who were placed for Adoption with adoptive parents different than the foster parent(s) they had been living with. %: The number of children of the specified age group who took the specified time to get from the first specified milestone to the next specified milestone as a percentage of all children in that age group who reached that next milestone during 2023.

Please note: Only children who have both of the specified dates (in a category) in CONNECTIONS are included in that category. Children with negative values are excluded. Therefore, children who are freed before the goal of adoption is set are excluded from the goal to free category. Children with waivers from photo listing are excluded from all Ns and Percentages.

## ADOPTION CHARACTERISTICS 2023

TIME FROM GOAL TO DISCHARGE	Less than 2 Years			2 to 3 Years			More than 3 Years		
	N	%	Comp	N	%	Comp	N	%	Comp
Less than eight years old:	25	100.0	79.6	0	0.0	11.3	0	0.0	9.1
Eight years old or older:	8	88.9	66.7	1	11.1	5.4	0	0.0	27.9

SEQUENCE OF MILESTONES	Goal First			Simultaneous (Within 30 days)			Free First		
	N	%	Comp	N	%	Comp	N	%	Comp
	26	29.9	44.1	19	21.8	20.0	42	48.3	35.9

SUBSIDIES AT TIME OF DISCHARGE	N of Children	%	Comp
	34	100.0	97.4

Time from Goal to Discharge (to Adoption): N: Children of the specified age group who were discharged to Adoption in 2023 whose time from goal set to Adoption to discharge to Adoption was in the specified time period.

%: The number of children of each age group who took the specified time to get from goal set to Adoption to be discharged to adoption as a percentage of all children in that age group who were discharged to Adoption during 2023.

Sequence of Milestones: For children who had both a goal of adoption and were free in 2023, percentages for whom sequence of these milestones were: Goal [set] First, or [goal set] Within 30 Days [of freeing], or Free(d) First.

Subsidies at Time of Discharge: N: Number of children discharged to adoption in 2023 with a subsidy designation.

%: Discharges with a designated subsidized adoption as a percentage of all discharges to adoption.

Children with waivers from photo listing are excluded from all Ns and Percentages.



**ADOPTION  
TREND DATA  
2019-2023**

**GOAL SET:**

	<b>N</b>	<b>Annual Rate</b>	<b>Percent Change In Rate</b>	<b>Comp Rate</b>	<b>Percent Change In Comparable Rate</b>
2019	36	4.6		7.3	
2020	43	6.1	34.1	5.7	-21.8
2021	60	8.7	41.6	8.2	42.9
2022	56	8.4	-3.6	7.7	-6.1
2023	55	8.5	1.4	8.3	7.8

**FREED:**

	<b>N</b>	<b>Annual Rate</b>	<b>Percent Change In Rate</b>	<b>Comp Rate</b>	<b>Percent Change In Comparable Rate</b>
2019	42	5.3		6.9	
2020	28	4.0	-25.2	3.4	-50.5
2021	60	8.7	117.4	6.5	90.2
2022	64	9.6	10.2	7.5	14.8
2023	51	7.9	-17.7	6.7	-10.9

**PLACED:**

	<b>N</b>	<b>Annual Rate</b>	<b>Percent Change In Rate</b>	<b>Comp Rate</b>	<b>Percent Change In Comparable Rate</b>
2019	35	33.7		25.1	
2020	25	27.5	-18.4	21.0	-16.2
2021	46	39.7	44.3	22.7	7.9
2022	50	33.1	-16.5	26.5	16.8
2023	49	38.6	16.5	23.9	-9.8

**DISCHARGED  
TO ADOPTION:**

	<b>N</b>	<b>Annual Rate</b>	<b>Percent Change In Rate</b>	<b>Comp Rate</b>	<b>Percent Change In Comparable Rate</b>
2019	45	48.9		46.6	
2020	31	38.3	-21.8	33.6	-27.8
2021	27	25.7	-32.8	41.4	23.2
2022	66	48.9	90.1	40.9	-1.2
2023	34	27.6	-43.5	43.4	6.2

For detailed description of variables see page 17, "Adoption Milestones."

## **APPENDIX A: CLARIFICATION OF DATA SOURCES AND DEFINITIONS**

This appendix clarifies definitions or specifies which data were used to produce the Child Protective Services (CPS), Foster Care, and Adoption components of the MAPS packages. All Child Protective Services program data used come from the CONNECTIONS database. Foster Care and Adoption data come from the CONNECTIONS Activity Module, the formerly Child Care Review Service (CCRS). Data from 2019-2023 are provided for selected variables. For the definitions of these variables, refer to the MAPS page where the variable appears.

Starting with MAPS 2007, changes were made to the source file, race/ethnicity categories, and the Preventive services pages. Details regarding these changes are found in this appendix.

### **Population Sources**

The population figures used to calculate rates between 2018 and 2019 are taken from the 2018 Complete New York and New Jersey Demographic Database Files, Woods and Poole Economics, Inc. Starting from 2022 MAPS reporting, the population figures will be based on the annual county postcensal resident population estimates special tabulation compiled by the Census Bureau as the National Center for Health Statistics ceased to release postcensal bridged-race population estimates in 2021. The child population includes children under 22 in all program areas except CPS, where only children under 18 are included in rate calculations.

### **Race and Ethnicity Categories**

Prior to 2014, race/ethnicity data in MAPS were based on data entered into CCRS. Since 2014, ALL race/ethnicity data utilized in MAPS is based on CONNECTIONS. Any comparison of race/ethnicity distributions before and after 2014 should be made with extreme caution.

### **Coding of Race/Ethnicity in MAPS**

The Race/Ethnicity categories in the MAPS report use the following classifications:

<u>MAPS Category</u>	<u>Includes</u>
White	White (Not Hispanic)
African American	Black, Interracial Black/White, Interracial Black/Asian Ethiopian, Haitian (Non-Hispanic)
Latino	Interracial Puerto Rican/White, Interracial Puerto Rican/Black, Other Hispanic, Interracial Puerto Rican/Asian, Interracial Puerto Rican/ Other Hispanic, Puerto Rican, Cuban
Native American/Alaska Native	American Indian/Alaska Native (Non-Hispanic)
Asian	Cambodian, Interracial Asian/White, Asian, Laotian, Vietnamese (Non-Hispanic)
Unknown	Interracial Other, Other, Unknown

### **CHILD PROTECTIVE SERVICES (CPS)**

#### **Mandated Reporter**

The list of mandated reporters has been updated in MAPS 2021 to include additional reporter relation types in CONNECTIONS that meet the definition of professionals required to report cases of suspected child abuse or maltreatment. See detailed information in [OCFS Publications 1159](#).

#### **Family Assessment Response (FAR) data**

Starting with MAPS 2009, all CPS pages reflect Family Assessment Response (FAR) data for the counties that participate in this approach to CPS investigations. Beginning in late 2008, several counties were approved to use an alternative approach with families for some of their CPS maltreatment reports. This alternative approach, known as FAR, is considered a CPS response, even though no determination is made as to whether or not there is some credible evidence of maltreatment. The intent of FAR is to promote child safety and family well-being through enriched family engagement.

## **FOSTER CARE**

### **"Services Prior To/At Foster Care Admission", Page 9**

"On the date of the foster care admission" includes the actual date of foster care admission and up to 30 days after the admission date.

Children receiving Child Protective Services (CPS) are those who are in an indicated State Central Registry (SCR) case that remains open, are in an open CONNECTIONS case, and have a Service Program Choice code of "Protective" in CONNECTIONS.

### **"Admissions, Discharges and In Care, Facility Type by Placement, Location and Age", Page 11**

The "Other" category contains many specialized programs/services that serve very few children. If needed, information on what is included in this category is available upon request.

### **"Days in Care", Page 14**

All facility types (level of care) in the table are determined from specific movement codes entered into CONNECTIONS. The definition of foster boarding home includes emergency foster boarding homes. Some children placed in adoptive homes are counted in the foster boarding home category because that is how the home is coded in CONNECTIONS.

Other: Includes residential treatment facilities, skilled nursing facilities, specialized schools, etc.

Congregate Care: Includes Institutions, Agency Operated Boarding Home (AOBH), Group Home, Group Residence, Supervised Independent Living Programs (SILPs), and Other.

Adoptive Home: Includes Adoptive and/or Adoption Subsidy Home.

**APPENDIX B: COMPARABLE GROUPS**

Comparable Groups were established to permit meaningful comparison between counties with similar child welfare populations. In 2019, the comparable groups were revised by using 2016-2018 child welfare data. The revised classification is based on the total of 2016-2018 county averages of the following variables:

- Total number of children with preventive and/or protective services cases open anytime during the year;
- Total number of CPS/FAR reports during calendar year; and
- Total number of children served in foster care anytime during calendar year.

<b>Comp. Group 1: Extra Large</b>
Albany
Erie
Monroe
Nassau
Oneida
Onondaga
Orange
Suffolk
Westchester
New York City* (excluded from comparison calculations)

<b>Comp. Group 2: Large</b>
Broome
Cattaraugus
Chautauqua
Chemung
Dutchess
Jefferson
Niagara
Oswego
Rensselaer
Rockland
Saratoga
Schenectady
St. Lawrence
Steuben
Ulster

<b>Comp. Group 3: Medium</b>
Cayuga
Chenango
Clinton
Columbia
Cortland
Franklin
Fulton
Genesee
Herkimer
Madison
Montgomery
Ontario
Sullivan
Tompkins
Warren
Washington
Wayne

<b>Comp. Group 4: Small</b>
Allegany
Delaware
Essex
Greene
Hamilton
Lewis
Livingston
Orleans
Otsego
Putnam
Schoharie
Schuyler
Seneca
St. Regis Mohawk
Tioga
Wyoming
Yates

\* New York City belongs to Comparison Group 1. It is omitted in the calculations of comparison data. St. Regis Mohawk has been added to the county classification scheme in 2019. Hamilton and St. Regis Mohawk remain omitted in the calculations of comparison data.