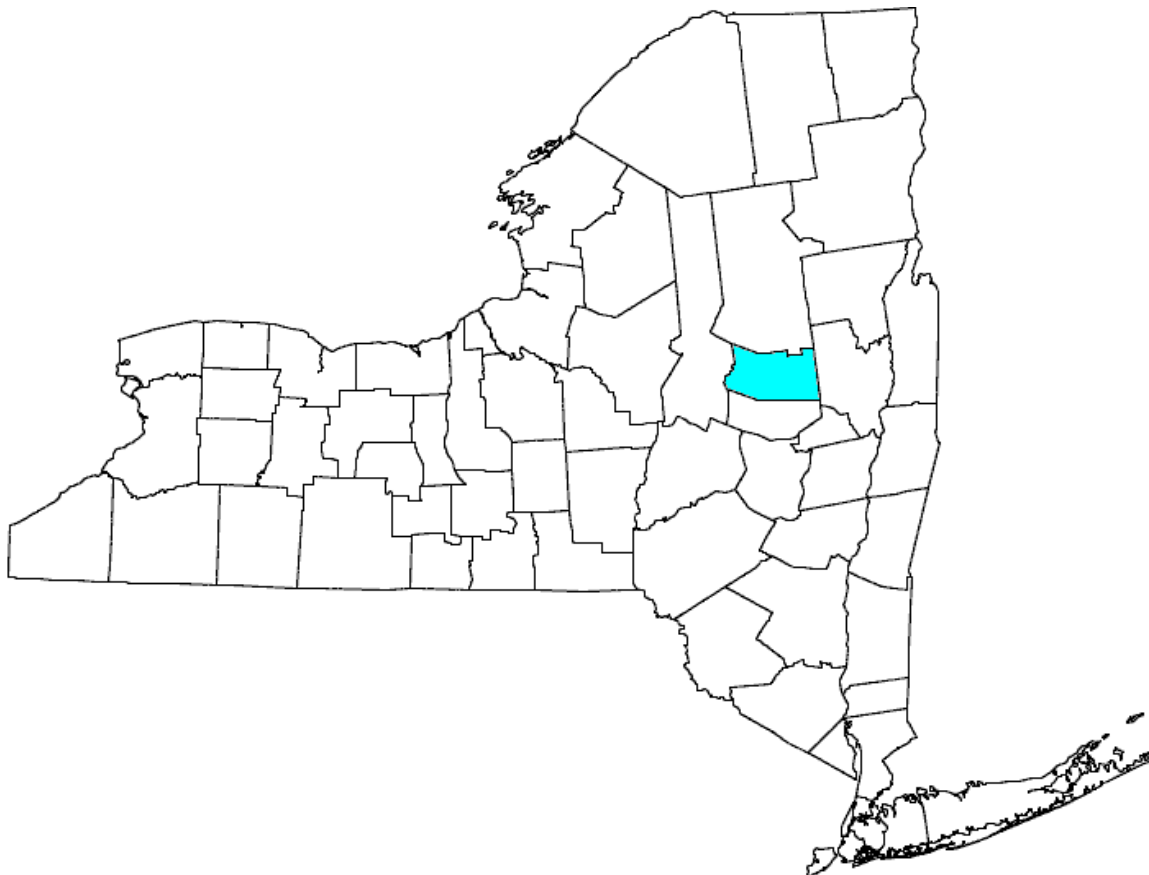


2020 Monitoring and Analysis Profiles With Selected Trend Data: 2016-2020

Child Protective Services
Foster Care
Adoption

Fulton County



New York State Office of Children and Family Services
Office of Strategic Planning and Policy Development
Bureau of Research, Evaluation and Performance Analytics

The 2020 Monitoring and Analysis Profiles (MAPS) data packages are being released for Child Protective Services, Foster Care, and Adoption Services.

Also, starting with 2009 MAPS, the Child Protective Services pages will reflect Family Assessment Response (FAR) data.

INTRODUCTION

The Monitoring and Analysis Profiles (MAPS) are data packages that provide information on the major child welfare services provided by local Departments of Social Services (DSS). MAPS was developed in 1985 to support the program monitoring role of the Regional Office staff and New York State Office of Children and Family Services (OCFS). Since then, the MAPS packages, which are produced annually, have also been disseminated to assist in child welfare planning and decision-making.

This MAPS package provides data on Child Protective Services (CPS), Foster Care, and Adoption for all counties. It contains detailed information for 2020 and charts of selected trend information for the five-year period, 2016-2020. Data for New York City, Upstate, and Statewide are contained in separate packages.

Program data on Child Protective Services, Foster Care, and Adoption are taken from the CONNECTIONS Activity Module, formerly the Child Care Review Service (CCRS) database. This is a statewide, computerized child welfare database.

The current MAPS package was developed based on the data contained in OCFS Data Warehouse on June 14, 2021, and from the CONNECTIONS database as of June 14, 2021. The numbers in the MAPS package may differ from those that appear on routine reports that are distributed by OCFS either because they are taken from the databases on different dates or because the definition of a term differs. Additionally, reporting lags by some Local Social Services Districts affect all Foster Care and Adoption data.

In most instances, numbers are converted into rates or percentages to highlight important aspects of the child welfare service programs. The use of rates and percentages is a critical component of MAPS, as it allows for comparisons by controlling for differences in population. The population figures used to calculate rates for 2016 through 2019 are taken from the 2018 Complete New York and New Jersey Demographic Database Files, Woods and Poole Economics, Inc. Starting from 2020 MAPS reporting, the population figures will base on the Vintage 2019 postcensal estimates of the resident population of the United States compiled by the National Center for Health Statistics. For Child Protective Services data, rates are calculated based on the number of children ages 0 through 17 because very few reports are taken on youth aged 18 and over. However, since OCFS does have children in foster care 18 years old and above, the rates for Foster Care and Adoption are based on the number of children ages 0 through 21.

The MAPS package focuses on developing a profile of the child welfare services programs in each Local Social Services District. The data describe what are believed to be key, measurable characteristics of county child welfare services. The package is designed to provide a framework within which to examine the relationships among variables, raise questions, and initiate discussions about child welfare programs. It is not intended to judge performance or to focus attention on a single variable.

The MAPS package supports two types of comparisons - comparing a county DSS to a group of comparable counties for a given year and comparing the county to itself over time. Appendix B lists the counties included in each of the four Comparison Groups, along with a brief description of the methodology used in determining these groups. By referencing a county's data to its comparables, one can identify when a county differs from the norm. In and of themselves, differences from the norm do not have a positive or negative meaning. Such differences require discussion and analysis to understand them and to determine whether any action is needed.

Definitions necessary to understand the data are printed at the bottom of the appropriate page. These definitions also apply to the multi-year data pages. Appendix A contains additional clarifying information to facilitate an accurate interpretation of complex variables. Careful review and use of the MAPS package are required to understand the data.

In summary, MAPS is not intended to be a package of indicators by which performance may be judged. Rather, it is intended to provide a framework within which reasoned questions can be asked by those who have been trained to its uses and limitations and who have substantive knowledge of the child welfare system in New York State. Questions about this data and suggestions and/or comments related to the design of this package may be directed to Hui-Shien Tsao, Research Scientist, Bureau of Research, Evaluation and Performance Analytics, 52 Washington St., 3rd floor, Rensselaer, New York 12144-2796, or (518) 474-6791. E-mail requests for copies can be sent to Hui-Shien Tsao at Hui-Shien.Tsao@ocfs.ny.gov.

MONITORING AND ANALYSIS PROFILES

2020 Table of Contents

	Page
Child Protective Services	1
Workload Data	2
Determination Timeliness	3
Trend Data	4
Foster Care Services	5
Graph: Admissions/Discharges/In Care, 2016-2020	6
Admissions/Discharges/In Care	7
Characteristics	8
Services Prior to/at Admission	9
Time in Care by Age	10
Facility Type by Placement, Location and Age	11
Discharges by Time in Care	12
Goal by Age	13
Days In Care	14
Trend Data	15
Adoption Services	16
Milestones	17
Waiting Population on 12/31/20	18
Time to Achieve Milestones	19
Characteristics	20
Trend Data	21

**CHILD
PROTECTIVE
SERVICES**

**CHILD PROTECTIVE SERVICES
WORKLOAD DATA
2020**

	FULTON		COMPARABLES
	N	Rate	Rate
REPORTS RECEIVED	1,048	97.5	64.5
	N	%	%
REPORTS BY MANDATED REPORTER	626	59.7	61.0
OF REPORTS DETERMINED:			
Reports Indicated	168	16.9	26.6
Reports Unfounded	828	83.1	73.4
OF REPORTS REGISTERED:			
Determinations Overdue	52	5.0	3.4

Reports Received

N: Number of reports received during the calendar year, whether determined or assessed.

Rate: Number of reports received during the calendar year for every 1,000 children in the district.

Reports by Mandated Reporter

N: Number of reports received during the calendar year with a mandated reporter as the source of the report.

%: Number of reports received during the calendar year with a mandated reporter as the source of the report, as a percentage of all reports received during the calendar year.

Reports Determined

N: Number of reports that were registered in calendar year 2020 and indicated/unfounded by 06/14/21.

%: Number of reports that were registered in calendar year 2020 and indicated/unfounded by 06/14/21, as a percentage of all reports that were registered in 2020 and determined by 06/14/21.

Determinations Overdue

N: Number of reports that were registered in calendar year 2020 and had no determination by 06/14/21.

%: Number of reports that were registered in calendar year 2020 and had no determination by 06/14/21, as a percentage of all reports that were registered in 2020, excluding those reports selected for assessment rather than investigation.

Reports Assessed

N: Number of reports that were registered in calendar year 2020 and assigned to the Family Assessment Response track by 06/14/21.

Rate is the total number of FAR reports divided by the total number of reports received.

See the Appendix A for detailed definitions of CONNECTIONS data.

**CHILD PROTECTIVE SERVICES
REPORT DETERMINATIONS -- TIMELINESS
2020**

REPORT DETERMINATION TIMELINESS:	FULTON		COMPARABLES
	N	%	%
	228	22.9	46.9

DAYS TO REPORT DETERMINATION:	FULTON		COMPARABLES
	N	%	%
All Reports Determined			
0-30 Days	44	4.4	13.6
31-60	184	18.5	33.2
61-90	236	23.7	29.0
>90	532	53.4	24.2

Indicated			
0-30 Days	6	0.6	2.2
31-60	27	2.7	8.3
61-90	29	2.9	8.9
>90	106	10.6	7.2

Unfounded			
0-30 Days	38	3.8	11.5
31-60	157	15.8	24.9
61-90	207	20.8	20.1
>90	426	42.8	16.9

Report Determination Timeliness

N: Number of reports that were registered in the calendar year and determined within 60 days.

%: Number of reports that were determined within 60 days, as a percentage of all reports that were determined in the calendar year 2020, excluding those reports selected for assessment rather than investigation.

Days to Report Determination: Number of reports determined in calendar year 2020 that received a determination by 06/14/21 and were determined within each respective range of days for each of the three determination categories. See Appendix A for detailed definitions of CONNECTIONS data.

**CHILD PROTECTIVE SERVICES
TREND DATA
2016-2020**

REPORTS RECEIVED:

	N	Annual Rate	Percent Change In Rate
2016	942	86.9	
2017	1,001	92.7	6.7
2018	1,060	98.3	6.1
2019	1,088	101.4	3.1
2020	1,048	97.5	-3.9

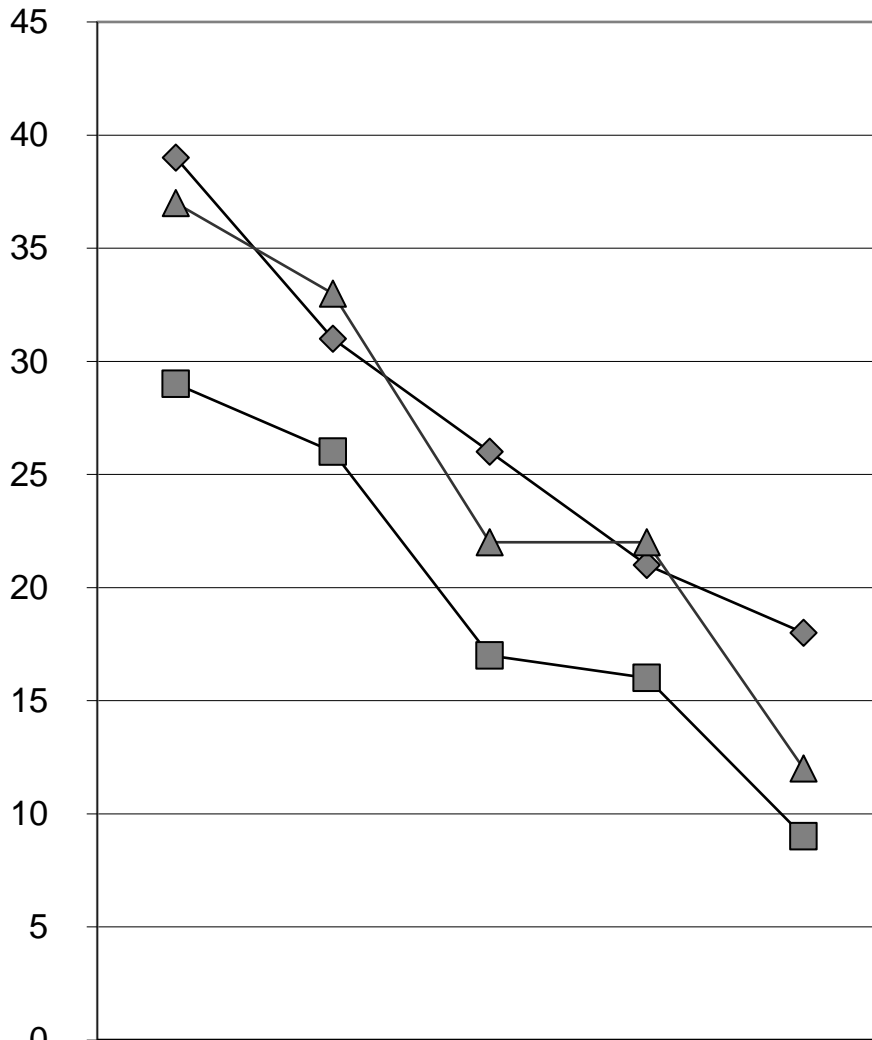
REPORTS INDICATED:

	N	Annual Rate	Percent Change In Rate
2016	212	22.5	
2017	184	18.4	-18.3
2018	242	22.8	24.2
2019	171	15.7	-31.2
2020	168	16.9	7.3

For detailed description of variables see page 2, "Child Protective Services Workload Data".
See Appendix A for details on CONNECTIONS CPS data.

**FOSTER
CARE**

**FOSTER CARE
IN CARE, ADMISSIONS, and DISCHARGES
Fulton County
2016-2020**



	2016	2017	2018	2019	2020
—◆— In Care	39	31	26	21	18
—■— Admissions	29	26	17	16	9
—▲— Discharges	37	33	22	22	12

**FOSTER CARE ADMISSIONS/DISCHARGES/INCARE
BY AGE, RACE AND ETHNICITY
2020**

	N	Rate	Comparison
Admissions	9	0.7	2.0
In Care	18	1.4	3.9
Discharges	12	40.0	30.9

AGE:

	Admissions			In Care			Discharges		
	N	%	Comp.	N	%	Comp.	N	%	Comp.
< 2	2	22.2	26.9	3	16.7	14.6	1	8.3	11.8
2-5	0	0.0	21.1	4	22.2	25.2	1	8.3	21.1
6-9	3	33.3	15.2	3	16.7	14.2	1	8.3	13.1
10-13	2	22.2	17.6	3	16.7	17.8	2	16.7	17.3
14-17	1	11.1	18.3	3	16.7	23.0	4	33.3	22.4
18+	1	11.1	1.0	2	11.1	5.3	3	25.0	14.3

RACE/ETHNICITY:

	Admissions		In Care		Discharges	
	N	%	N	%	N	%
White	6	66.7	15	83.3	9	75.0
African American	2	22.2	0	0.0	2	16.7
Latino	0	0.0	0	0.0	1	8.3
Native American/ Alaska Native	0	0.0	0	0.0	0	0.0
Asian	0	0.0	0	0.0	0	0.0
Unknown	1	11.1	3	16.7	0	0.0

PERCENTAGE OF DISCHARGES BY DESTINATION:

	Home %	Adoption %	Independent Living %	Other State Agency %	Other %
FULTON	66.7	8.3	25.0	0.0	0.0

Admissions: N: Number of children admitted to foster care during the calendar year. If multiple admissions of the same child occur during the calendar year, only the most recent admission is counted.

Rate: The number of children admitted to foster care during the calendar year for every 1,000 children in the district.

Discharges: N: Number of children discharged during the calendar year. The number does not include trial discharges.

This discharge number may not exactly match discharge numbers reported on other MAPs pages due to definitional differences. %: Children discharged during the calendar year, as a percentage of all children who were in foster care at any time during the calendar year.

In Care: N: Number of children in foster care on 12/31/20. Children who are absent or in trial discharge are not counted as in care population.

Rate: The number of children in foster care on 12/31/20 for every 1,000 children in the district.

Race/Ethnicity: See Appendix A for details. Race/ethnicity is classified into mutually exclusive categories. In the process, children identified as White/Hispanic or Black /Hispanic are counted under Latino and not in White or African American.

Destination: For children discharged during 2020, the stated discharge reason:

Return to a homelike setting (Home); discharge to adoption (Adoption); assuming responsibility for self, e.g. independent living, military service, etc. (Independent Living); discharge to another state service system (Other State Agency); or one of several other reasons, e.g., moved out of district, etc. (Other).

**FOSTER CARE CHARACTERISTICS
2020**

PLACEMENT IN FOSTER BOARDING AND ADOPTIVE HOMES:

Child's Race	Total with Race/ Ethnic Code	# Same as Foster/ Adoptive Parent	% Same as Foster/ Adoptive Parent
Total	8	8	100.0
White	8	8	100.0
African American	0	0	0.0
Latino	0	0	0.0
Native American/Alaska Native	0	0	0.0
Asian	0	0	0.0
Unknown/Missing		N 1	% 11.1

SIBLINGS IN FOSTER CARE:

Group Size:	Separated			Partly Separated			Intact		
	N	%	Comp	N	%	Comp	N	%	Comp
Two	0	0.0	26.3	-	-	-	4	100.0	67.8
Three	0	0.0	12.0	0	0.0	30.8	6	100.0	51.4
Four or more	0	0.0	6.0	1	100.0	62.0	0	0.0	14.4

**CHILDREN RETURNING TO
CARE BY LENGTH OF TIME
SINCE LAST DISCHARGE:**

	N	FULTON %	Comparables %
Total (0-24 months)	4	44.4	15.2
0-3 months	0	0.0	3.2
4-12 months	1	11.1	5.8
13-24 months	3	33.3	6.2

Total With Race/Ethnic Code:

N: Number of children in foster boarding or adoptive homes on 12/31/20 who have a race/ethnic code in CONNECTIONS.

Number With Same Race/Ethnic Code:

N: Number of children in foster boarding or adoptive homes on 12/31/20 whose race/ethnic code in CONNECTIONS is the same as at least one of his or her foster parent's race/ethnic code in CONNECTIONS. Congregate care and approved relative homes are excluded. **%:** Children with a race/ethnic code in CONNECTIONS whose code is the same as at least one foster parent's race/ethnic code in CONNECTIONS as a percentage of children in foster care on 12/31/20 with a race/ethnic code for a specified race/ethnic group. There are a small number of foster parents with no race/ethnic code in the CONNECTIONS database; these are counted as not matched.

Siblings in Foster Care: Separated: All of the siblings in a sibling group of the specified size are in separate facilities.

Partly Separated: Some of the siblings in a sibling group of the specified size are in separate facilities.

Intact: All of the siblings in a sibling group of the specified size are in the same facility.

N: Number of children in foster care on 12/31/20 who have a sibling in foster care. **%:** Number of siblings who are separated, partly separated, or intact as a percentage of all siblings in a sibling group of the same size.

Children Returning to Care By Length of Time Since Last Discharge: **N:** Number of children who were readmitted to foster care in 2020 who had been discharged from foster care within the specified number of months prior to the last 2020 admission. Children returning to foster care from a trial discharge are not considered to have been readmitted. **%:** The number of children readmitted to foster care in 2020, as a percentage of the total number of children admitted to foster care in 2020.

Race/Ethnicity – see Appendix A for definitions.

SERVICES PRIOR TO/AT 2020 FOSTER CARE ADMISSION

	FULTON	
	N	%
Mandated Preventive Services Only	0	0.0
Child Protective Services Only	2	22.2
Both Mandated Preventive and CPS	2	22.2
Neither Mandated Preventive nor CPS	5	55.6

SERVICES PRIOR TO/AT 2020 ADMISSION BY AGE:

AGE	MANDATED PREVENTIVE ONLY FULTON			CHILD PROTECTIVE ONLY FULTON		
	N	%	COMPARABLES	N	%	COMPARABLES
< 2	0	0.0	1.6	1	50.0	32.4
2-5	0	0.0	9.2	0	0.0	16.0
6-9	0	0.0	0.0	0	0.0	26.1
10-13	0	0.0	5.4	0	0.0	18.3
14-17	0	0.0	21.2	0	0.0	15.7
18+	0	0.0	0.0	1	100.0	5.9

AGE	BOTH MANDATED PREVENTIVE AND PROTECTIVE FULTON			NEITHER MANDATED PREVENTIVE NOR PROTECTIVE FULTON		
	N	%	COMPARABLES	N	%	COMPARABLES
< 2	0	0.0	22.0	1	50.0	44.0
2-5	0	0.0	39.0	0	0.0	29.9
6-9	1	33.3	46.4	2	66.7	27.5
10-13	1	50.0	29.0	1	50.0	41.5
14-17	0	0.0	17.3	1	100.0	45.9
18+	0	0.0	0.0	0	0.0	5.9

Please Note: All four categories are mutually exclusive.

Mandated Preventive Services Prior to or at the time of Foster Care Admission: N: Number of children admitted to foster care in 2020 who were opened to Mandated Preventive Services on the date of the foster care admission or who had a Service Program Choice of Mandated Preventive during the 12 months preceding admission.

Child Protective Services Prior to or at the time of Foster Care Admission: N: Number of children admitted to foster care in 2020 who were opened to Child Protective Services on the date of the foster care admission or who had a Service Program Choice of Protective during the 12 months preceding admission.

Services Prior To/At 2020 Admission by Age: %: Number of children in each age group within each category admitted to foster care in 2020 as a percentage of all children in that same age group who were admitted to foster care in 2020.

TIME IN CARE BY AGE
12/31/20

		AGE OF CHILDREN						
		< 2 YEARS %	2-5 YEARS %	6-9 YEARS %	10-13 YEARS %	14-17 YEARS %	18+ YEARS %	PERCENT OF TOTAL
< 1 YEAR		<hr/>						
	FULTON	100.0	0.0	0.0	100.0	33.3	50.0	44.4
	COMPARABLES	100.0	61.5	63.0	60.1	59.9	18.6	64.7
1-2 YEARS		<hr/>						
	FULTON	0.0	75.0	33.3	0.0	33.3	0.0	27.8
	COMPARABLES	0.0	27.7	18.2	22.0	16.1	14.6	16.8
2-3 YEARS		<hr/>						
	FULTON		0.0	0.0	0.0	33.3	0.0	5.6
	COMPARABLES		7.4	7.7	8.1	8.4	13.6	6.8
> 3 YEARS		<hr/>						
	FULTON		25.0	66.7	0.0	0.0	50.0	22.2
	COMPARABLES		3.4	11.1	9.8	15.7	53.2	11.6
TOTAL		<hr/>						
	FULTON	N= 3	N= 4	N= 3	N= 3	N= 3	N= 2	N= 18

For children in foster care on 12/31/20, the chart shows the percentage of each age group (column) by the length of time indicated in the rows. Districts with no children in care for an age group are excluded from the comparable calculation for that column.

**ADMISSIONS, DISCHARGES, AND IN CARE
FACILITY TYPE BY PLACEMENT, LOCATION AND AGE
2020**

TYPE OF PLACEMENT:	AGE OF CHILDREN			PERCENT	COMP PERCENT	PLACEMENT Out Of County N	LOCATION Out Of State N
	< 11 YEARS N	11+ YEARS N	TOTAL N				
Congregate Care							
Admissions	0	0	0	0.0	12.8		
In Care	0	2	2	11.1	16.9	2	0
Discharges	0	4	4	33.3	23.3		
Foster Boarding Homes							
Admissions	4	3	7	77.8	65.5		
In Care	7	2	9	50.0	61.3	4	0
Discharges	5	3	8	66.7	61.1		
Approved Relative Homes							
Admissions	1	1	2	22.2	19.7		
In Care	4	2	6	33.3	18.9	3	0
Discharges	0	0	0	0.0	13.0		
Other							
Admissions	0	0	0	0.0	2.0		
In Care	0	1	1	5.6	2.8	0	0
Discharges	0	0	0	0.0	2.6		
Total							
Admissions	5	4	9	100.0			
In Care	11	7	18	100.0		9	0
Discharges	5	7	12	100.0			

Admissions & Discharges: N: The number of children admitted to/discharged from each type of placement during 2020.

In Care: N: The number of children in each type of placement on 12/31/20.

%: Children in each facility type as a percentage of all children admitted, discharged or in care.

Congregate Care: Includes AOBH, Group Home, Group Residence and Institution.

Other: Includes SILP (Supervised Independent Living Program) and all other categories.

Placement Location: N: The number of children in a placement outside the county on 12/31/20. Out of county does not include out of state placements.

**FOSTER CARE DISCHARGES
BY TIME IN CARE
2020**

AGE OF CHILDREN AT DISCHARGE

	< 2 YEARS %	2-5 YEARS %	6-9 YEARS %	10-13 YEARS %	14-17 YEARS %	18+ YEARS %	PERCENT OF TOTAL
< 1 YEAR							
FULTON	100.0	0.0	100.0	100.0	25.0	0.0	41.7
COMPARABLES	76.8	42.2	51.4	42.0	40.6	11.8	41.9
1-2 YEARS							
FULTON	0.0	0.0	0.0	0.0	75.0	33.3	33.3
COMPARABLES	23.2	17.5	17.7	29.2	40.4	16.8	26.1
2-3 YEARS							
FULTON		100.0	0.0	0.0	0.0	0.0	8.3
COMPARABLES		29.7	19.3	16.4	8.9	22.7	13.8
> 3 YEARS							
FULTON		0.0	0.0	0.0	0.0	66.7	16.7
COMPARABLES		10.6	11.5	12.4	10.1	48.7	18.2
TOTAL							
FULTON	N= 1	N= 1	N= 1	N= 2	N= 4	N= 3	N= 12

For children discharged from foster care during 2020, the chart shows the percentage of each age group (column) by the length of time indicated in the rows. Districts with no children discharged for an age group are excluded from the comparable calculation for that column.
Discharges: The total discharge number may not exactly match discharge numbers reported on other MAPS pages due to definitional differences.

**GOAL BY AGE
12/31/20**

		< 2 YEARS %	2-5 YEARS %	6-9 YEARS %	10-13 YEARS %	14-17 YEARS %	18+ YEARS %	PERCENT OF TOTAL	
ADULT CUSTODIAL CARE									
	FULTON	0.0	0.0	0.0	0.0	0.0	0.0	0.0	
	COMPARABLES	0.0	0.0	0.0	0.0	0.2	2.1	0.1	
ADOPTION									
	FULTON	0.0	25.0	66.7	0.0	0.0	0.0	16.7	
	COMPARABLES	16.2	34.7	38.0	36.0	22.8	14.9	29.7	
G O A	PARENT/GUARDIAN								
	FULTON	100.0	75.0	33.3	100.0	66.7	0.0	66.7	
	COMPARABLES	80.7	60.9	54.0	56.9	52.5	10.3	56.7	
L	ANOTHER PLANNED LIVING ARRANGEMENT (APLA)								
S	FULTON	0.0	0.0	0.0	0.0	0.0	100.0	11.1	
	COMPARABLES	0.0	0.0	0.0	0.0	11.2	70.6	6.7	
OTHER GOALS									
	FULTON	0.0	0.0	0.0	0.0	33.3	0.0	5.6	
	COMPARABLES	3.1	4.4	8.0	7.1	13.2	2.1	6.8	
TOTAL IN CARE									
	FULTON	N= 3	N= 4	N= 3	N= 3	N= 3	N= 2	N= 18	

For children in foster care on 12/31/20 with a reported goal, the chart shows the percentage of each age group (column) with the goal indicated in the row. Districts with no children in care for an age group are excluded from the comparable calculation for that column. Children with waivers are included in the Adoption percentages.

Note: The totals on this page do not count children where a goal is not set.

DAYS IN CARE

Total Days in Care

	2016	2017	2018	2019	2020
Institution	5,098	4,667	3,822	3,117	985
Foster Boarding Home	7,709	6,671	5,750	3,530	3,604
Agency Operated Boarding Home	53	86	0	0	0
Group Residence	170	365	93	0	0
Group Home	1,867	615	216	62	191
Adoptive Home	0	0	0	0	0
Approved Relative Home	391	92	1,107	1,237	1,916
Supervised Independent Living Program	0	0	0	0	0
Other	732	793	730	730	546
<i>Total</i>	16,020	13,289	11,718	8,676	7,242

	2016	2017	2018	2019	2020
Congregate Care	7,920	6,526	4,861	3,909	1,722
Foster Boarding Home/Adoptive Home	7,709	6,671	5,750	3,530	3,604
Approved Relative Home	391	92	1,107	1,237	1,916
<i>Total</i>	16,020	13,289	11,718	8,676	7,242

Percent of Days in Care

	2016	2017	2018	2019	2020
Institution	31.8%	35.1%	32.6%	35.9%	13.6%
Foster Boarding Home	48.1%	50.2%	49.1%	40.7%	49.8%
Agency Operated Boarding Home	0.3%	0.6%	0.0%	0.0%	0.0%
Group Residence	1.1%	2.7%	0.8%	0.0%	0.0%
Group Home	11.7%	4.6%	1.8%	0.7%	2.6%
Adoptive Home	0.0%	0.0%	0.0%	0.0%	0.0%
Approved Relative Home	2.4%	0.7%	9.4%	14.3%	26.5%
Supervised Independent Living Program	0.0%	0.0%	0.0%	0.0%	0.0%
Other	4.6%	6.0%	6.2%	8.4%	7.5%
<i>Total</i>	100.0%	100.0%	100.0%	100.0%	100.0%

	2016	2017	2018	2019	2020
Congregate Care	49.4%	49.1%	41.5%	45.1%	23.8%
Foster Boarding Home/Adoptive Home	48.1%	50.2%	49.1%	40.7%	49.8%
Approved Relative Home	2.4%	0.7%	9.4%	14.3%	26.5%
<i>Total</i>	100.0%	100.0%	100.0%	100.0%	100.0%

Percent Change Over Previous Year

	2016-2017	2017-2018	2018-2019	2019-2020	2016-2020
Institution	-8.5%	-18.1%	-18.4%	-68.4%	-80.7%
Foster Boarding Home	-13.5%	-13.8%	-38.6%	2.1%	-53.2%
Agency Operated Boarding Home	62.3%	-100.0%	.	.	-100.0%
Group Residence	114.7%	-74.5%	-100.0%	.	-100.0%
Group Home	-67.1%	-64.9%	-71.3%	208.1%	-89.8%
Adoptive Home
Approved Relative Home	-76.5%	1103.3%	11.7%	54.9%	390.0%
Supervised Independent Living Program	.	.	0.0%	.	.
Other	8.3%	-7.9%	0.0%	-25.2%	-25.4%
<i>Total</i>	-17.0%	-11.8%	-26.0%	-16.5%	-54.8%

	2016-2017	2017-2018	2018-2019	2019-2020	2016-2020
Congregate Care	-17.6%	-25.5%	-19.6%	-55.9%	-78.3%
Foster Boarding Home/Adoptive Home	-13.5%	-13.8%	-38.6%	2.1%	-53.2%
Approved Relative Home	-76.5%	1103.3%	11.7%	54.9%	390.0%
<i>Total</i>	-17.0%	-11.8%	-26.0%	-16.5%	-54.8%

Other: Includes residential treatment facilities, skilled nursing facilities, specialized schools, etc.
Congregate Care: Includes Institutions, AOBH, Group Home, Group Residence, SILPs and Other.
Adoptive Home: Includes Adoptive and/or Adoption Subsidy Home.

**FOSTER CARE
TREND DATA
2016-2020**

CHILDREN IN CARE:

	N	Annual Rate	Percent Change in Rate	Comp Rate	Percent Change in Comparable Rate
2016	39	3.0		3.8	
2017	31	2.4	-19.7	3.8	-1.0
2018	26	2.0	-15.9	3.7	-2.7
2019	21	1.6	-19.3	3.5	-3.7
2020	18	1.4	-13.8	3.9	11.0

CHILDREN ADMITTED:

	N	Annual Rate	Percent Change in Rate	Comp Rate	Percent Change in Comparable Rate
2016	29	2.2		2.3	
2017	26	2.0	-9.4	2.4	6.0
2018	17	1.3	-34.4	2.4	-2.0
2019	16	1.2	-5.9	2.1	-11.5
2020	9	0.7	-43.4	2.0	-3.6

CHILDREN DISCHARGED:

	N	Annual Rate	Percent Change in Rate	Comp Rate	Percent Change in Comparable Rate
2016	37	48.7		40.3	
2017	33	51.6	5.9	43.2	7.0
2018	22	45.8	-11.1	42.3	-2.0
2019	22	51.2	11.6	40.8	-3.5
2020	12	40.0	-21.8	30.9	-24.4

For detailed description of variables see page 12, "Foster Care Admissions/Discharges/In Care by Age, Race and Ethnicity."

ADOPTION

**ADOPTION MILESTONES
2020**

	FULTON		COMPARABLES
	N	%	%
CHILDREN WHO HAD A MILESTONE OCCUR DURING 2020:			
Goal Set during 2020	0	0.0	10.8
Freed during 2020	0	0.0	6.0
Placed during 2020	0	0.0	17.0
Discharged to Adoption during 2020	1	100.0	32.6

CHILDREN IN FOSTER CARE ON 12/31/20 WITH A GOAL OF ADOPTION: 3

Goal Set

N: Number of children with a goal set to Adoption during the calendar year.

%: Children who had a "goal set," as a percentage of all children in foster care at any time during the calendar year.

Freed

N: Number of children freed during the calendar year.

%: Children "freed," as a percentage of all children in foster care at any time during the calendar year.

Placed

N: Number of children placed for Adoption during the calendar year.

%: Children "placed," as a percentage of all children in foster care who had a goal of Adoption on 12/31/20 or had a goal set to Adoption, were freed, placed or discharged to Adoption at any time during the calendar year.

Discharged to Adoption

N: Number of children discharged to Adoption during the calendar year.

%: Children "discharged," as a percentage of children in foster care at any time during the calendar year, who had a goal of Adoption and had a status of free for Adoption.

Children with waivers are excluded from all Ns and Percentages.

WAITING POPULATION ON 12/31/20

	RETURN HOME			ADOPTION			OTHER		
	N	%	Comp	N	%	Comp	N	%	Comp
Less than 8 years old:	4	80.0	29.8	1	20.0	65.4	0	0.0	4.8
8 years old or older:	2	40.0	18.2	2	40.0	53.8	1	20.0	28.0

	TOTAL N	WAITING LESS THAN 1 YEAR		WAITING 1 YEAR OR MORE	
		N	%	N	%
Goal and not Free:	3	0	0.0	3	100.0
Less than 8 years old:	1	0	0.0	1	100.0
8 years old or older:	2	0	0.0	2	100.0
Free and not Placed:	0	0	0.0	0	0.0
Less than 8 years old:	0	0	0.0	0	0.0
8 years old or older:	0	0	0.0	0	0.0
Free, Placed and not Discharged:	0	0	0.0	0	0.0
Less than 8 years old:	0	0	0.0	0	0.0
8 years old or older:	0	0	0.0	0	0.0

In Foster Care for 2 or more years with a Goal of: Return Home/Adoption/Other Goal N: As of 12/31/20, the number of children who had been in care for 2 years or longer, who were in the specified age group, and who had the specified goal. %: As of 12/31/20, children who had been in care for 2 years or longer, who were in the specified age group, and who had the specified goal, as a percentage of all children in foster care who were in the specified age group.

Goal and not Free N: As of 12/31/20, all children who had a goal of Adoption and who were "waiting" to be freed for the specified time. %: As of 12/31/20, all children who had a goal of Adoption and who were "waiting" to be freed for the specified time, as a percentage of all children who were "waiting" to be freed.

Free and not Placed N: As of 12/31/20, all children who had a goal of Adoption, were freed for Adoption, and were "waiting" to be placed for the specified time. %: As of 12/31/20, all children who had a goal of Adoption, were freed for Adoption, and were "waiting" to be placed for the specified time, as a percentage of all children who were "waiting" to be placed.

Free, Placed and not Discharged (to Adoption) N: As of 12/31/20, all children who had a goal of Adoption, were freed for Adoption, and were in an adoptive placement, and were "waiting" to be discharged for the specified time. %: As of 12/31/20, all children who had a goal of Adoption, were freed for Adoption, were in an adoptive placement, and were "waiting" to be discharged for the specified time, as a percentage of all children who were "waiting" to be discharged.

Less than 8 years old and 8 years old or older N: For the three waiting populations described above, the number of children in the specified age group and time period. %: For the children in each age group who are in the three waiting populations described above, the % that were waiting, as of 12/31/20, less than one year or one year or more.

Children with waivers from photo listing are excluded from all Ns and Percentages in the Children Waiting to Achieve an Adoption Milestone section.

**TIME TO ACHIEVE MILESTONES
DURING 2020**

Admission to Goal Set:	LESS THAN 2 YEARS		2 TO 3 YEARS		GREATER THAN 3 YEARS	
	N	%	N	%	N	%
	Less than 8 years:	0	0.0	0	0.0	0
8 years or older:	0	0.0	0	0.0	0	0.0

	LESS THAN 6 MONTHS		6 MONTHS TO 1 YEAR		GREATER THAN 1 YEAR	
	N	%	N	%	N	%
Goal to Free:						
Less than 8 years:	0	0.0	0	0.0	0	0.0
8 years or older:	0	0.0	0	0.0	0	0.0
Petition Date to Free Date:						
Less than 8 years:	0	0.0	0	0.0	0	0.0
8 years or older:	0	0.0	0	0.0	0	0.0
Free to Place:						
Less than 8 years:	0	0.0	0	0.0	0	0.0
8 years or older:	0	0.0	0	0.0	0	0.0
Placed with Foster Parent:						
Less than 8 years:	0	0.0	0	0.0	0	0.0
8 years or older:	0	0.0	0	0.0	0	0.0
Not Placed with Foster Parent:						
Less than 8 years:	0	0.0	0	0.0	0	0.0
8 years or older:	0	0.0	0	0.0	0	0.0

Admission to Goal Set: N: For children of the specified age group who had their goal set to Adoption in 2020, the time from admission to foster care to having their goal set to Adoption.

Goal to Free: N: For children of the specified age group who were freed for Adoption in 2020, the time from having the goal set until they were freed.

Petition Date to Free Date: N: For children of the specified age group who were freed for Adoption in 2020, the time from the date their petition to be freed was filed until they were freed.

Free to Place: N: For children of the specified age group who were placed in an Adoptive home in 2020, the time from when they were freed until the placement.

Placed with Foster Parent: N: Children who were placed for Adoption with the foster parent(s) they were living with.

Not Placed with Foster Parent: N: Children who were placed for Adoption with adoptive parents different than the foster parent(s) they had been living with. %: The number of children of the specified age group who took the specified time to get from the first specified milestone to the next specified milestone as a percentage of all children in that age group who reached that next milestone during 2020.

Please note: Only children who have both of the specified dates (in a category) in CONNECTIONS are included in that category. Children with negative values are excluded. Therefore, children who are freed before the goal of adoption is set are excluded from the goal to free category. Children with waivers from photo listing are excluded from all Ns and Percentages.

**ADOPTION CHARACTERISTICS
2020**

TIME FROM GOAL TO DISCHARGE	Less than 2 Years			2 to 3 Years			More than 3 Years		
	N	%	Comp	N	%	Comp	N	%	Comp
Less than eight years old:	1	100.0	57.6	0	0.0	17.1	0	0.0	7.7
Eight years old or older:	0	0.0	24.4	0	0.0	17.9	0	0.0	16.5

SEQUENCE OF MILESTONES	Goal First			Simultaneous (Within 30 days)			Free First		
	N	%	Comp	N	%	Comp	N	%	Comp
	0	0.0	65.2	0	0.0	8.2	0	0.0	20.8

SUBSIDIES AT TIME OF DISCHARGE	N of Children	%	Comp
	1	100.0	92.6

Time from Goal to Discharge (to Adoption): N: Children of the specified age group who were discharged to Adoption in 2020 whose time from goal set to Adoption to discharge to Adoption was in the specified time period.

%: The number of children of each age group who took the specified time to get from goal set to Adoption to be discharged to adoption as a percentage of all children in that age group who were discharged to Adoption during 2020.

Sequence of Milestones: For children who had both a goal of adoption and were free in 2020, percentages for whom sequence of these milestones were: Goal [set] First, or [goal set] Within 30 Days [of freeing], or Free(d) First.

Subsidies at Time of Discharge: N: Number of children discharged to adoption in 2020 with a subsidy designation.

%: Discharges with a designated subsidized adoption as a percentage of all discharges to adoption.

Children with waivers from photo listing are excluded from all Ns and Percentages.

**ADOPTION
TREND DATA
2016-2020**

GOAL SET:

	N	Annual Rate	Percent Change In Rate	Comp Rate	Percent Change In Comparable Rate
2016	5	6.6		10.6	
2017	7	10.9	66.3	13.4	27.0
2018	3	6.3	-42.9	10.9	-18.5
2019	4	9.3	48.8	9.8	-10.0
2020	0	0.0	-100.0	10.8	9.7

FREED:

	N	Annual Rate	Percent Change In Rate	Comp Rate	Percent Change In Comparable Rate
2016	5	6.6		10.5	
2017	7	10.9	66.3	8.8	-16.6
2018	1	2.1	-81.0	12.2	39.3
2019	1	2.3	11.6	9.2	-24.8
2020	0	0.0	-100.0	6.0	-34.7

PLACED:

	N	Annual Rate	Percent Change In Rate	Comp Rate	Percent Change In Comparable Rate
2016	0	0.0		21.0	
2017	0	0.0	.	20.2	-4.0
2018	0	0.0	.	23.8	17.9
2019	1	12.5	.	17.3	-27.5
2020	0	0.0	-100.0	17.0	-1.8

**DISCHARGED
TO ADOPTION:**

	N	Annual Rate	Percent Change In Rate	Comp Rate	Percent Change In Comparable Rate
2016	7	87.5		45.5	
2017	0	0.0	-100.0	43.6	-4.3
2018	4	44.4	0.0	44.8	3.0
2019	4	80.0	80.0	55.5	23.8
2020	1	100.0	25.0	32.6	-41.3

For detailed description of variables see page 17, "Adoption Milestones."

APPENDIX A: CLARIFICATION OF DATA SOURCES AND DEFINITIONS

This appendix clarifies definitions or specifies which data were used to produce the Child Protective Services (CPS), Foster Care, and Adoption components of the MAPS packages. All Child Protective Services program data used come from the CONNECTIONS database. Foster Care and Adoption data come from the CONNECTIONS Activity Module, the formerly Child Care Review Service (CCRS). Data from 2016-2020 are provided for selected variables. For the definitions of these variables, refer to the MAPS page where the variable appears.

Starting with MAPS 2007, changes were made to the source file, race/ethnicity categories, and the Preventive services pages. Details regarding these changes are found in this appendix.

Population Sources

The population figures used to calculate rates between 2016 and 2019 are taken from the 2018 Complete New York and New Jersey Demographic Database Files, Woods and Poole Economics, Inc. Starting from 2020 MAPS reporting, the population figures will base on the Vintage 2019 postcensal estimates of the resident population of the United States compiled by the National Center for Health Statistics. The child population includes children under 22 in all program areas except CPS, where only children under 18 are included in rate calculations.

Race and Ethnicity Categories

Prior to 2014, race/ethnicity data in MAPS were based on data entered into CCRS. Since 2014, ALL race/ethnicity data utilized in MAPS is based on CONNECTIONS. Any comparison of race/ethnicity distributions before and after 2014 should be made with extreme caution.

Coding of Race/Ethnicity in MAPS

The Race/Ethnicity categories in the MAPS report use the following classifications:

<u>MAPS Category</u>	<u>Includes</u>
White	White (Not Hispanic)
African American	Black, Interracial Black/White, Interracial Black/Asian Ethiopian, Haitian (Non-Hispanic)
Latino	Interracial Puerto Rican/White, Interracial Puerto Rican/Black, Other Hispanic, Interracial Puerto Rican/Asian, Interracial Puerto Rican/ Other Hispanic, Puerto Rican, Cuban
Native American/Alaska Native	American Indian/Alaska Native (Non-Hispanic)
Asian	Cambodian, Interracial Asian/White, Asian, Laotian, Vietnamese (Non-Hispanic)
Unknown	Interracial Other, Other, Unknown

CHILD PROTECTIVE SERVICES (CPS)

Family Assessment Response (FAR) data

Starting with MAPS 2009, all CPS pages reflect Family Assessment Response (FAR) data for the counties that participate in this approach to CPS investigations. Beginning in late 2008, several counties were approved to use an alternative approach with families for some of their CPS maltreatment reports. This alternative approach, known as FAR, is considered a CPS response, even though no determination is made as to whether or not there is some credible evidence of maltreatment. The intent of FAR is to promote child safety and family well-being through enriched family engagement.

FOSTER CARE

"Services Prior To/At Foster Care Admission", Page 9

"On the date of the foster care admission" includes the actual date of foster care admission and up to 30 days after the admission date.

Children receiving Child Protective Services (CPS) are those who are in an indicated State Central Registry (SCR) case that remains open, are in an open CONNECTIONS case, and have a Service Program Choice code of "Protective" in CONNECTIONS.

"Admissions, Discharges and In Care, Facility Type by Placement, Location and Age", Page 11

The "Other" category contains many specialized programs/services that serve very few children. If needed, information on what is included in this category is available upon request.

"Days in Care", Page 14

All facility types (level of care) in the table are determined from specific movement codes entered into CONNECTIONS. The definition of foster boarding home includes emergency foster boarding homes. Some children placed in adoptive homes are counted in the foster boarding home category because that is how the home is coded in CONNECTIONS.

Other: Includes residential treatment facilities, skilled nursing facilities, specialized schools, etc.

Congregate Care: Includes Institutions, Agency Operated Boarding Home (AOBH), Group Home, Group Residence, Supervised Independent Living Programs (SILPs), and Other.

Adoptive Home: Includes Adoptive and/or Adoption Subsidy Home.

APPENDIX B: COMPARABLE GROUPS

Comparable Groups were established to permit meaningful comparison between counties with similar child welfare populations. In 2019, the comparable groups were revised by using 2016-2018 child welfare data. The revised classification is based on the total of 2016-2018 county averages of the following variables:

- Total number of children with preventive and/or protective services cases open anytime during the year;
- Total number of CPS/FAR reports during calendar year; and
- Total number of children served in foster care anytime during calendar year.

Comp. Group 1: Extra Large
Albany
Erie
Monroe
Nassau
Oneida
Onondaga
Orange
Suffolk
Westchester
New York City* (excluded from comparison calculations)

Comp. Group 2: Large
Broome
Cattaraugus
Chautauqua
Chemung
Dutchess
Jefferson
Niagara
Oswego
Rensselaer
Rockland
Saratoga
Schenectady
St. Lawrence
Steuben
Ulster

Comp. Group 3: Medium
Cayuga
Chenango
Clinton
Columbia
Cortland
Franklin
Fulton
Genesee
Herkimer
Madison
Montgomery
Ontario
Sullivan
Tompkins
Warren
Washington
Wayne

Comp. Group 4: Small
Allegany
Delaware
Essex
Greene
Hamilton
Lewis
Livingston
Orleans
Otsego
Putnam
Schoharie
Schuyler
Seneca
St. Regis Mohawk
Tioga
Wyoming
Yates

* New York City belongs to Comparison Group 1. It is omitted in the calculations of comparison data. St. Regis Mohawk has been added to the county classification scheme in 2019. Hamilton and St. Regis Mohawk remain omitted in the calculations of comparison data.