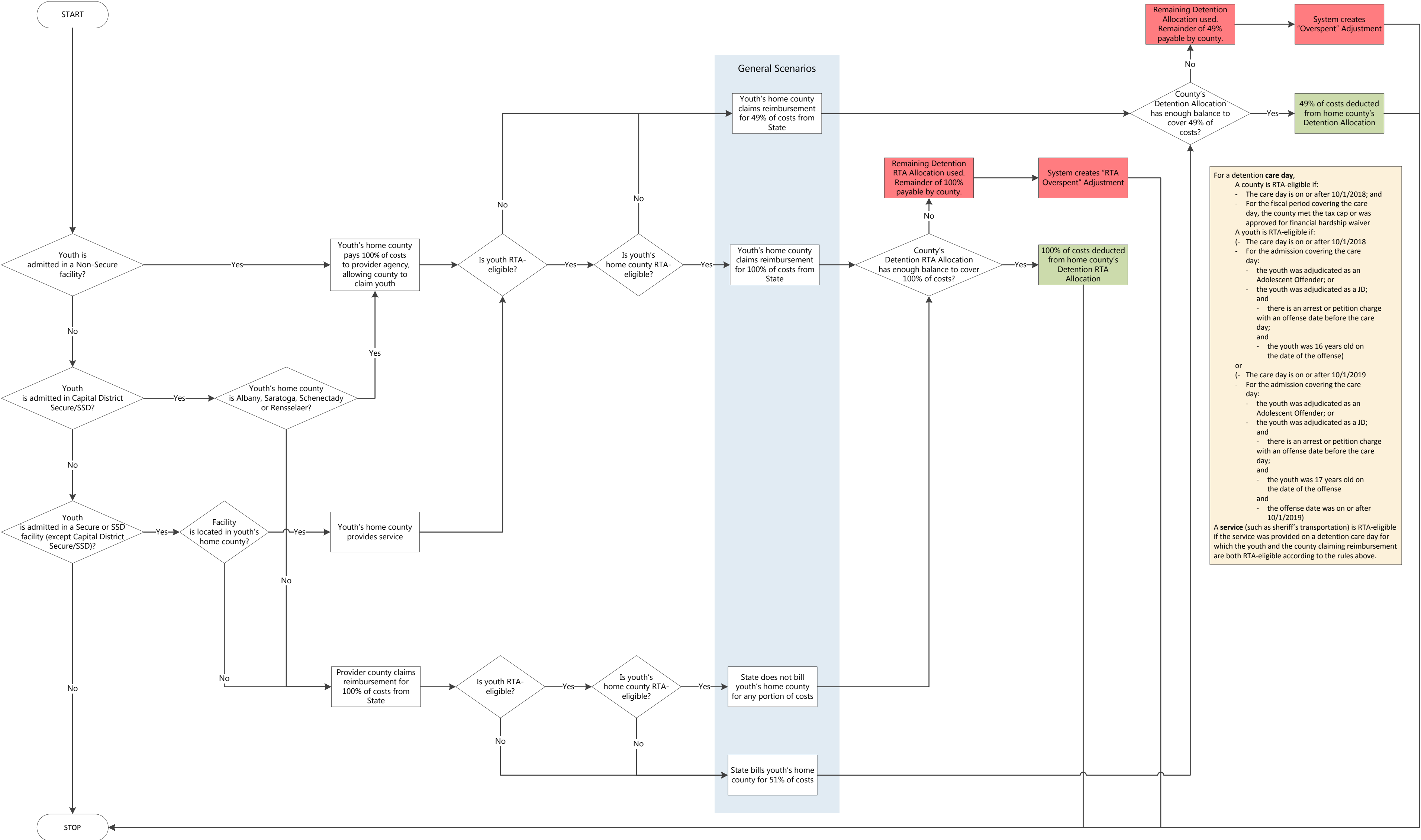


JDAS Claiming and Billing Logic Flowchart (With Detention and Detention RTA Allocations)



For a detention **care day**,
 A county is RTA-eligible if:

- The care day is on or after 10/1/2018; and
- For the fiscal period covering the care day, the county met the tax cap or was approved for financial hardship waiver

A youth is RTA-eligible if:

- The care day is on or after 10/1/2018
- For the admission covering the care day:
 - the youth was adjudicated as an Adolescent Offender; or
 - the youth was adjudicated as a JD; and
 - there is an arrest or petition charge with an offense date before the care day; and
 - the youth was 16 years old on the date of the offense)

or

- The care day is on or after 10/1/2019
- For the admission covering the care day:
 - the youth was adjudicated as an Adolescent Offender; or
 - the youth was adjudicated as a JD; and
 - there is an arrest or petition charge with an offense date before the care day; and
 - the youth was 17 years old on the date of the offense
 - and
 - the offense date was on or after 10/1/2019)

A **service** (such as sheriff's transportation) is RTA-eligible if the service was provided on a detention care day for which the youth and the county claiming reimbursement are both RTA-eligible according to the rules above.

General Scenarios

Youth's home county claims reimbursement for 49% of costs from State

Youth's home county claims reimbursement for 100% of costs from State

State does not bill youth's home county for any portion of costs

State bills youth's home county for 51% of costs

Youth's home county provides service

Provider county claims reimbursement for 100% of costs from State