

**Acha oswa mizajou  
nan ekipman ak founiti  
pou fè fas ak COVID-19**

**SIBVANSYON POU ESTABILIZASYON GADRI**

**NEW  
YORK  
STATE**

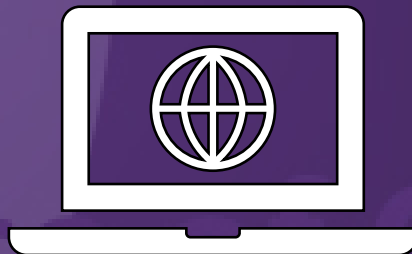
**Office of Children  
and Family Services**



**Child Care  
Stabilization  
Grants** Help is on  
the way

## Ou kapab itilize fon yo pou:

- ekipman ak founiti pou anndan ak deyò
- Materyèl biznis nesesè pou nouvo pwoblèm yo
- amelyorasyon teknolojik itilize pou kolekte done epi rapòte bay ajans an tèt yo



NEW  
YORK  
STATE

Office of Children  
and Family Services

# Kèk ekipman byen presi kapab genyen:

- Ekipman baryè, tankou patisyon pòtab an plastik oswa akrilik, oswa Vit ijyenik, pou aplike distans sosyal la.
- Enstalasyon lavabo pou gen plis espas pou moun lave men
- Materyèl sèvis manje ki jetab, tankou materyèl kizin, kabare, asyèt, gode ak bòl
- Pano COVID-19 yo endike mask obligatwa ak rapèl pou distans sosyal
- Resipyan pou estoke objè pèsonèl tankou mask pèsonèl pou timoun, rad anplis ak dyapè
- Resipyan pou estoke materyèl ak ekipman pou kreye plis espas pou distans sosyal nan sal klas yo

## Asire ou konsève dosye annapre yo:2}

- Resi nenpòt objè ou achte a, sa gen ladan lank enprimant ki te itilize pou enprime pano yo
- Fakti nenpòt konpayi ki te ede w enstale ekipman an oswa enprime pano yo
- Kopi chèk ki anile, manda postal (*money order*), atestasyon kat kredi oswa dosye bank elektwonik pou pwodui ak sèvis

NEW  
YORK  
STATE

Office of Children  
and Family Services

**Ou PA oblije soumèt resi oswa fakti oswa jwenn yon apwobasyon preyalab pou atik yo nan men OCFS pou w ka jwenn lajan sibvansyon ou a, men ou dwe dokimante jan ou depanse li. W ap bezwen kenbe dosye sou papye oswa dosye elektwonik sa yo pou pi pitit senk ane.**

The logo for New York State, featuring a white outline of the state's map on a dark purple background. The words "NEW YORK STATE" are written in white, bold, uppercase letters to the right of the map.

**NEW  
YORK  
STATE**

**Office of Children  
and Family Services**

**Dokimante kijan ou depanse lajan sibvansyon w lan pou w ka montre ou te sèvi avè l pou amelyore pwogram ou an oswa pou ede w redemare aprè l jans Sante Piblik COVID-19 la.**

**NEW  
YORK  
STATE**

**Office of Children  
and Family Services**

**Pwogram an kapab merite yon verifikasyon sou kijan ou te itilize fon federal yo pou ede pwogram ou an. Si sa rive, w ap bezwen kapab montre kijan ou te depanse lajan sibvansyon w lan epi ou te itilize l pou amelyore pwogram ou an oswa ede l redemare apre l jans sante piblik COVID-19 la.**

**[cdc.gov/coronavirus/2019-ncov/community/schools-childcare/index.html](https://www.cdc.gov/coronavirus/2019-ncov/community/schools-childcare/index.html)**



Centers for Disease Control and Prevention  
CDC 24/7: Saving Lives, Protecting People™

# Fon sa yo kapab itilize pou achte lojisyèl biznis ki kapab ede ou:

- Swiv prezans timoun yo
- Anrejistre prezans anplwaye
- Ede nan kominikasyon ak paran

Epi amelyore mwayen teknolojik k ap ede w kolekte done epi rapòte bezwen

NEW  
YORK  
STATE

Office of Children  
and Family Services



## Dosye pou konsève:

- Resi nenpòt lojisyèl ou achte
- Fakti pou nenpòt asistans teknik yon konpayi lojisyèl te bay
- Kopi chèk ki anile, biyè a òd, atestasyon kat kredi oswa dosye bank elektwonik pou achte oswa peye sèvis yo

The logo for New York State, featuring a white outline of the state's map on a dark purple background. The words "NEW YORK STATE" are written in white, bold, uppercase letters to the right of the map.

NEW  
YORK  
STATE

Office of Children  
and Family Services

## Resous Kiyès ki kapab Ede:

- Regilatè.
- Ajans lokal pou Resous ak Referans Gadri (Child Care Resource and Referral, CCR&R)
- Reprezantan sendika
- Ajans enskripsyon
- WHEDco
- Sant pou Kontwòl ak Prevansyon Maladi (Centers for Disease Control and Prevention)

NEW  
YORK  
STATE

Office of Children  
and Family Services

Gade sit entènèt Sant Èd Estabilizasyon an pou jwenn plis enfòmasyon, mizajou, videyo ak èd biwo nan chak kategori ki nan 8 kategori sibvansyon yo.

<https://ocfs.ny.gov/childcare-stabilization/>

The logo for New York State, featuring a white outline of the state's map on a dark purple background. The text "NEW YORK STATE" is written in white, bold, uppercase letters to the right of the map outline.

NEW  
YORK  
STATE

Office of Children  
and Family Services